



REPUBLIC OF SEYCHELLES

MIGRATION AND TOURISM STATISTICS, 2008

2009 Edition

**National Statistics Bureau
P.O. Box 206, Victoria, Seychelles**

PREFACE

Introduction

This is the 2009 edition in an annual series of Migration and Tourism Statistics.

Method of compilation

Visitors Statistics are obtained from Immigration Embarkation and Disembarkation cards completed by all travellers and they are analysed in accordance with World Tourism Organisation recommendations.

Visitors are classified according to their country of residence rather than their nationality and detailed tables are presented in time series of at least five years.

Detailed tables referring to resident movement and migration are also recorded.

The National Statistics Bureau compiles tables relating to Hotel Statistics from information provided by hotels, guesthouses and self-catering apartments. Their co-operation and assistance is gratefully acknowledged.

Tourism Section (TS)

National Statistics Bureau (NSB)

May 2009

CONTENTS

<i>Table</i>	<i>Page</i>
<u>Commentary</u>	1-2
<i>Chart: Visitor Arrivals By Region of Residence, 2003 - 2008</i>	3
1. <i>Visitors and cruise ship passengers, 1998 - 2008</i>	4
2. <i>International migration and tourism, 1992 - 2008</i>	5
3. <i>Visitor arrivals and average length of stay, 2002 - 2008</i>	6
4. <i>Visitor arrivals by purpose of visit, 2005 - 2008</i>	7
5. <i>Visitor statistics: Quarterly summary, 1999 - 2008</i>	8
6. <i>Visitor arrivals by country of present residence, 2004 - 2008</i>	9
7. <i>Visitor arrivals by country of residence and month, 2008</i>	10
8. <i>Quarterly visitor arrivals, 2006 - 2008</i>	11-14
9. <i>Visitor departures: Distribution of length of stay, 1999 - 2008</i>	15
10. <i>Visitor arrivals by mode of transport, 2007 - 2008</i>	16
11. <i>Visitors stay by location and accomodation, 2007 - 2008</i>	17
12. <i>Residential status and intention of migrants, 2004 - 2008</i>	18
13. <i>Departure of residents by purpose of visit, 2008</i>	19
14. <i>Departure of residents by continent of destination, 2008</i>	20
15. <i>Age and sex distribution of migrants, 2008</i>	21
16. <i>Resident departures by country of destination, 2008</i>	22
17. <i>Resident departures by purpose of visit, 2008</i>	23
18. <i>Bed and room occupancy rates by type of accommodation and location, 2008</i>	24
19. <i>Bed available and bed-nights occupied by type of accommodation and location, 2007 - 2008</i>	25
20. <i>Bed and room occupancy rates by type of accommodation and location, 2007 - 2008</i>	26
21. <i>Bed-nights occupied and bed-occupancy rates by size of establishment Mahe and other Islands, 2007 - 2008</i>	27
22. <i>Beds, bed-nights occupied and bed-occupancy rates, 2004 - 2008</i>	28
23. <i>Hotel Statistics: Analysis by occupancy and by visitosrs</i>	29
24. <i>Bed-nights occupied by type of accommodation and location, 2004 - 2008</i>	30
25. <i>Beds available by type of accommodation and location, 2004 - 2008</i>	31
26. <i>Chart: Average number of beds available, 2004 - 2008</i>	32
27. <i>Chart: Bednights occupied, 2004 - 2008</i>	33
28. <i>Statistical Publications</i>	34

2008 Visitor Statistics

1. One hundred and fifty eight thousand nine hundred and fifty two (158952) visitors arrived in Seychelles during 2008, representing a decrease of 1% below the peak of 2007.
2. Of the 158952 visitors who arrived in Seychelles during 2008, 156286 (98%) arrived by air and 2666 (2%) arrived by sea. Of those arriving by air, 153996 (99%) were visitors while 2290 (1%) were transit visitors. Of those arriving by sea, 1348 (51%) were visitors while 1318 (49%) were in transit (Table 10).
3. Increases were recorded in the number of visitors from France (20%), Italy (15%), Germany (13%) and UK & Eire (9%) (Table 6).

Length of stay (Tables 1, 3 and 9)

4. The average length of stay in 2008 was 10.1 nights, compared to 9.9 nights in 2007. The number of visitor nights in 2008 was 1605415, which was 1% above the figure for 2007.

Purpose of visit (Tables 4 and 5)

5. Eighty-nine percent (89%) of visitors in 2008 were on holiday, 6% were on business or combining business with a holiday and 2% were in transit. Comparing 2008 to 2007 the number of visitors on holiday decreased by 3%, visitors on business increased by 27%, and transit visitors decreased by 13%.

Country of Residence (Tables 5 - 8)

6. In 2008, 78% of the visitors came from Europe, 12% from Africa, 7% from Asia and 3% from America. Compared to 2007 increases were recorded in visitors from Africa (13%) and America 6%, where as decreases were recorded in visitors coming from both Europe and Asia (3%) and Oceania 18% respectively.
7. The leading markets in 2008 were:

	<u>No. of visitors</u>	<u>% of total</u>
France	31386	19.7
Italy	23818	15.0
Germany	21222	13.4
UK & Eire	13816	8.7
South Africa	8219	5.2
Russia	6569	4.1
Middle East	5424	3.4
Switzerland	5268	3.3
Mauritius	4086	2.6
Scandinavia	3325	2.1
USA	3116	2.0
Austria	3070	1.9
Spain & Portugal	2851	1.8

8. Compared to 2007 increases were recorded in the number of visitors from Germany (9%), Netherlands and South Africa both (1%), Russia and the Indian sub Continent both (11%), Reunion (21%), Mauritius (29%) and the Middle East (10%) .

Tourism Expenditure (Table 1)

9. Foreign exchange earnings from the tourism sector show that during 2008, R1236 million was earned compared to R1194 million in 2007.

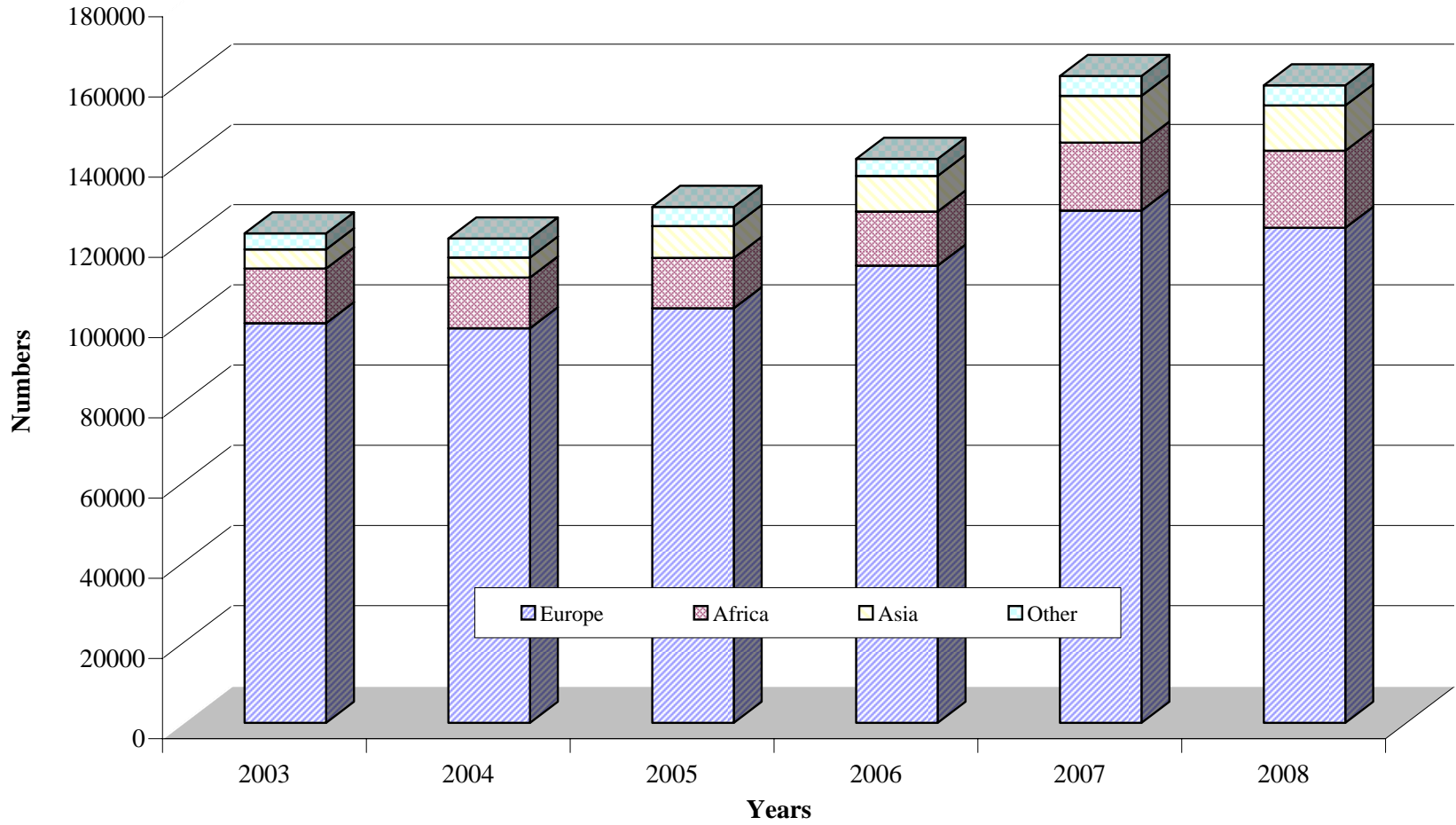
Migration statistics, 2008 (Tables 13 - 17)

10. There has been a net migration of (+922) persons in 2008, representing an increase of +451 persons compared to 2007. This net migration of (+922) persons is accounted for by a net gain (+1408) of long-term migrants, a net gain (+1127) of short-term migrants and a net lost (-1613) residents who were absent for short periods. Details on the age and sex distribution of migrants in 2008 are shown in Table 15.
11. An analysis of departing residents is presented in Tables 12, 13, 16 and 17. Table 14 shows that 24% of all departing residents went to Europe, 37% to Africa and 36% to Asia. (15%) of these departures were persons leaving for more than one year. Table 16 shows that 6% of all the departing residents went to France, 9% to UK & Eire, 23% to Mauritius, 2% to Kenya, 6% to South Africa, 8% to Dubai, 10% to India and 7% to Singapore.
12. Sixty-four percent (64%) of all departing residents were going on holiday whilst 13% were going on business or for employment. Of the long-term departures, 27% were emigrating and 59% were leaving after completing their contract. Of the short-term departures, 74% were going on holiday while 15% were leaving for business or employment (Table 13 and 17).

Hotel statistics (Tables 18 - 25)

13. Licensed accommodation establishments sold a total of 1007120 bed nights and 520740 room nights during 2008. This figure shows a decrease of 10% below the 2007 level in both bed and room nights occupied. Visitors occupied 990430 (98%) bed nights and 62% of visitor nights were spent in licensed accommodation establishments.
14. The percentage occupancy rates during 2008 were 57% for beds and 60% for rooms, compared to 56% for beds and 58% for rooms in 2007.
15. The occupancy rates for the major categories of hotels have shown increases. The highest bed occupancy rate in 2008 was for hotels and self-catering on Praslin (64%). Hotels on Mahe, La Digue and Other Islands recorded 61%, 58% and 50% bed occupancy rates, respectively.
16. On average there were 4840 beds available in 2008, which shows a decrease of 11% compared to 2007.

Visitor Arrivals By Region of Residence 2003 -2008



Source: NSB

VISITORS AND CRUISE SHIP PASSENGERS, 1998-2008

Table 1

YEAR	NUMBER OF VISITOR ARRIVALS	AVERAGE LENGTH OF STAY (NIGHTS)	VISITOR NIGHTS (000) (1)	NUMBER OF CRUISE SHIP PASSENGERS (2)	TOURISM EXPENDITURE (Rm) (3)
1998	128258	10.5	1347	6147	584
1999	124865	10.4	1299	4716	596
2000	130046	10.4	1352	10176	600
2001	129762	10.4	1350	7562	649
2002	132246	10.1	1336	3038	706
2003	122038	10.1	1233	4698	729
2004	120765	10.0	1208	5024	818
2005	128654	9.7	1248	6389	824
2006	140627	9.8	1378	9527	885
2007	161273	9.9	1597	9906	1194
2008	158952	10.1	1605	14466	1236
<u>2005</u>					
Q1	33024	9.3	307	2464	234
Q2	26168	9.8	256	1061	187
Q3	32327	10.5	339	1499	202
Q4	37135	9.2	342	1365	201
<u>2006</u>					
Q1	35685	9.4	335	4316	220
Q2	29987	9.7	291	1656	209
Q3	36343	10.6	385	0	213
Q4	38612	9.6	371	3555	243
<u>2007</u>					
Q1	41270	9.6	396	4844	236
Q2	35008	10.0	350	1853	223
Q3	40344	10.7	432	0	300
Q4	44651	9.4	420	3209	435
<u>2008</u>					
Q1	44143	9.7	428	6861	358
Q2	35809	10.1	362	1599	278
Q3	38677	10.9	422	0	192
Q4	40323	9.9	399	6006	408

Source: National Statistics Bureau

Notes:

- (1) Visitor arrivals times average length of stay
- (2) Not included as visitors
- (3) Tourism earnings reported by banks cover only foreign exchange converted into domestic currency by tourism establishments. As such, they exclude foreign exchange earned but retained by authorised establishments to cover their various external commitments.

INTERNATIONAL MIGRATION AND TOURISM, 1992 - 2008

Table 2

Numbers

	Migrants		Residents (Short Absences)	Total Non- Visitors	Visitors	Total Visitors + Non-Visitors
	Long Term	Short Term				
<u>ARRIVALS</u>						
1992	2043	62	18672	20777	98547	119324
1993	2277	106	22592	24975	116180	141155
1994	2699	122	23470	26291	109901	136192
1995	1912	51	26439	28402	120716	149118
1996	1974	56	26342	28372	130955	159327
1997	2370	83	27935	30388	130070	160458
1998	2966	265	28738	31969	128258	160227
1999	2917	615	29345	32877	124865	157742
2000	2425	381	31997	34803	130046	164849
2001	2768	479	36252	39499	129762	169261
2002	2517	670	47075	50262	132246	182508
2003	2476	1968	44234	48678	122038	170716
2004	2324	3141	42436	47901	120765	168666
2005	2671	4270	44904	51845	128654	180499
2006	2941	5792	46742	55475	140627	196102
2007	4673	4724	49279	58676	161273	219949
2008	7280	3214	44507	55001	158952	213953
<u>DEPARTURES</u>						
1992	1906	540	18529	20975	98721	119696
1993	2381	400	21914	24695	114590	139285
1994	2496	797	22594	25887	109006	134893
1995	2286	584	25471	28341	118420	146761
1996	2283	599	26085	28967	128505	157472
1997	2430	774	26775	29979	128277	158256
1998	2533	995	27581	31109	127055	158164
1999	2736	1120	27953	31809	123563	155372
2000	3465	952	31464	35881	126990	162871
2001	2925	942	36973	40840	127411	168251
2002	2922	1661	47978	52561	127992	180553
2003	2702	1485	45520	49707	121060	170767
2004	2671	1483	44131	48285	119769	168054
2005	3016	1630	47810	52456	127891	180347
2006	3214	2143	49708	55065	137841	192906
2007	3623	2027	52555	58205	159761	217966
2008	5872	2087	46120	54079	157521	211600

VISITOR ARRIVALS AND AVERAGE LENGTH OF STAY, 2002 - 2008

Table 3

	Jan	Feb	Mar	Apr	May	Jun	Jul	Aug	Sep	Oct	Nov	Dec	Year
	(Numbers)												
2002	9770	13365	15125	10830	8915	8190	10651	11244	10239	11767	10208	11942	132246
2003	8683	11843	12282	12518	9671	8191	9832	9970	8771	10116	9458	10703	122038
2004	9787	10954	10698	10515	9188	7483	9975	10919	8123	11344	9839	11940	120765
2005	10144	10213	12667	10615	7658	7895	10502	12444	9381	12446	12240	12449	128654
2006	11920	12528	11237	12702	8321	8964	11588	13666	11089	13867	11134	13611	140627
2007	11170	14543	15557	14709	9967	10332	13704	14149	12491	16729	13290	14632	161273
2008	12799	14863	16481	15063	11200	9546	13128	14139	11410	14189	12815	13319	158952
	(Percentage change)												
03/02	-11	-11	-19	16	8	0	-8	-11	-14	-14	-7	-10	-8
04/03	13	-8	-13	-16	-5	-9	1	10	-7	12	4	12	-1
05/04	4	-7	18	1	-17	6	5	14	15	10	24	4	7
06/05	18	23	-11	20	9	14	10	10	18	11	-9	9	9
07/06	-6	16	38	16	20	15	18	4	13	21	19	8	15
08/07	15	2	6	2	12	-8	-4	0	-9	-15	-4	-9	-1
AVERAGE LENGTH OF STAY (1)	(Nights)												
2002	10.3	9.1	9.6	9.9	10.4	10.5	10.5	11.4	10.4	10.0	9.8	9.8	10.1
2003	10.9	8.9	9.3	9.3	10.1	10.3	10.6	11.4	10.8	10.2	9.9	10.1	10.1
2004	10.1	9.4	10.2	9.6	10.0	10.0	10.4	11.0	10.7	10.0	9.8	9.3	10.0
2005	9.3	9.5	9.2	9.9	9.8	9.5	10.2	10.6	10.5	9.8	8.8	9.2	9.7
2006	9.6	9.1	9.6	9.6	9.7	9.8	10.4	10.8	10.4	9.3	9.9	9.6	9.8
2007	10.2	8.9	9.7	9.9	10.0	10.1	10.4	11.1	10.5	9.0	9.7	9.6	9.9
2008	9.5	9.2	10.3	10.0	10.2	10.3	10.6	11.3	10.7	9.9	10.0	9.8	10.1

Source: National Statistics Bureau from disembarkation cards

Note: (1) Length of stay is calculated from immigration records from departing visitors.

VISITOR ARRIVALS BY PURPOSE OF VISIT, 2005 - 2008

Table 4

Number of visitors

	Jan	Feb	Mar	Apr	May	Jun	Jul	Aug	Sep	Oct	Nov	Dec	Year
<u>2005- Total</u>	<u>10144</u>	<u>10213</u>	<u>12667</u>	<u>10615</u>	<u>7658</u>	<u>7895</u>	<u>10502</u>	<u>12444</u>	<u>9381</u>	<u>12446</u>	<u>12240</u>	<u>12449</u>	<u>128654</u>
Holiday	8675	9407	11673	9447	6874	7093	9717	11318	8663	11439	10324	11396	116026
Business	466	431	503	641	534	572	459	466	446	556	593	577	6244
Holiday/Business	35	35	33	62	36	30	35	40	44	38	48	38	474
Transit	771	150	260	284	36	53	146	429	83	205	997	289	3703
Other/not stated	197	190	198	181	178	147	145	191	145	208	278	149	2207
<u>2006- Total</u>	<u>11920</u>	<u>12528</u>	<u>11237</u>	<u>12702</u>	<u>8321</u>	<u>8964</u>	<u>11588</u>	<u>13666</u>	<u>11089</u>	<u>13867</u>	<u>11134</u>	<u>13611</u>	<u>140627</u>
Holiday	10417	11367	10193	11872	7558	7934	10919	12751	10145	12492	10028	12273	127949
Business	485	522	464	527	542	621	446	391	621	680	779	548	6626
Holiday/Business	30	45	43	47	36	46	40	37	41	51	39	24	479
Transit	780	385	448	86	63	69	42	372	129	385	51	616	3426
Other/not stated	208	209	89	170	122	294	141	115	153	259	237	150	2147
<u>2007- Total</u>	<u>11170</u>	<u>14543</u>	<u>15557</u>	<u>14709</u>	<u>9967</u>	<u>10332</u>	<u>13704</u>	<u>14149</u>	<u>12491</u>	<u>16729</u>	<u>13290</u>	<u>14632</u>	<u>161273</u>
Holiday	10066	12445	14088	13893	9150	9397	12966	13069	11444	14851	12112	13431	146912
Business	658	610	642	521	621	644	523	391	598	745	689	633	7275
Holiday/Business	39	37	54	53	29	50	25	23	41	58	68	50	527
Transit	220	1180	545	62	61	55	39	595	194	691	270	249	4161
Other/not stated	187	271	228	180	106	186	151	71	214	384	151	269	2398
<u>2008- Total</u>	<u>12799</u>	<u>14863</u>	<u>16481</u>	<u>15063</u>	<u>11200</u>	<u>9546</u>	<u>13128</u>	<u>14139</u>	<u>11410</u>	<u>14189</u>	<u>12815</u>	<u>13319</u>	<u>158952</u>
Holiday	10274	12631	14958	13817	10219	8558	11415	13194	10287	13040	11229	12390	142012
Business	744	757	1003	922	769	692	715	576	731	829	912	584	9234
Holiday/Business	34	52	56	71	41	59	35	21	44	42	59	53	567
Transit	1543	1159	279	37	52	26	23	86	22	25	246	110	3608
Other/not stated	204	264	185	216	119	211	940	262	326	253	369	182	3531

Source: National Statistics Bureau from disembarkation cards

VISITOR STATISTICS: QUARTERLY SUMMARY, 1999 - 2008

Table 5

Year Quarter	Visitor arrivals (No.)	Purpose of visit (%)			Country of present residence (%)							
		Holiday	Business/ holiday	Transit/ Other	France	UK/Eire	Italy	Germany	Switzer- land	Total Europe	Africa	Other
1999	124865	88.4	5.3	6.3	19.4	12.5	15.6	15.1	4.2	80.9	11.4	7.7
2000	130046	90.5	5.0	4.5	21.7	12.7	15.3	13.6	3.8	80.1	10.6	9.3
2001	129762	89.5	4.9	5.5	19.6	13.5	16.3	13.0	4.0	79.3	10.7	10.0
2002	132246	88.5	5.3	6.2	21.4	14.6	15.1	11.5	3.9	79.9	10.5	9.6
2003	122038	89.9	5.0	5.1	21.3	15.7	14.6	13.0	3.9	81.7	11.2	7.2
2004	120765	89.6	5.6	4.9	21.6	14.9	14.2	12.8	3.7	81.5	10.5	8.1
2005	128654	90.2	5.2	4.6	21.4	13.1	14.3	13.2	3.5	80.4	9.8	9.9
2006	140627	91.0	5.1	4.0	19.4	11.4	16.5	13.7	3.5	81.1	9.6	9.3
2007	161273	91.1	4.8	4.1	19.8	10.5	15.8	12.0	3.4	79.2	10.5	10.3
2008	158952	89.3	6.2	4.5	19.7	8.7	15.0	13.4	3.3	77.7	12.1	10.3
<u>2006</u>												
Q1	35685	89.6	4.5	5.9	24.0	9.3	15.0	14.8	2.7	84.1	7.9	8.0
Q2	29987	91.3	6.1	2.7	17.5	11.5	17.3	15.1	3.5	79.4	10.5	10.1
Q3	36343	93.0	4.3	2.6	15.2	14.3	22.6	11.7	3.1	81.6	8.4	10.0
Q4	38612	90.1	5.5	4.4	20.8	10.4	11.6	13.5	4.7	79.1	11.6	9.3
<u>2007</u>												
Q1	41270	88.7	4.9	6.4	24.3	10.1	14.2	11.8	3.1	83.4	9.3	7.3
Q2	35008	92.7	5.5	1.9	19.2	10.3	17.6	12.4	3.4	79.1	11.2	9.7
Q3	40344	92.9	4.0	3.1	14.6	13.3	21.2	11.9	3.3	80.2	9.4	10.4
Q4	44651	90.5	5.0	4.5	20.7	8.6	11.2	12.1	3.8	74.4	12.1	13.5
<u>2008</u>												
Q1	44143	85.8	6.0	8.2	21.6	8.1	12.2	14.8	2.9	80.2	10.8	9.1
Q2	35809	91.0	7.1	1.8	19.9	8.5	16.4	13.0	3.2	77.1	11.6	11.3
Q3	38677	90.2	5.5	4.3	15.3	10.1	20.6	11.8	3.3	76.8	13.0	10.1
Q4	40323	90.9	6.1	2.9	21.8	8.1	11.3	13.5	3.9	76.2	13.1	10.7

Source : National Statistics Bureau from disembarkation cards.

VISITOR ARRIVALS BY COUNTRY OF PRESENT RESIDENCE
2004 - 2008

Table 6

Country of residence	2004	2005	2006	2007	2008
<u>TOTAL</u>	<u>120765</u>	<u>128654</u>	<u>140627</u>	<u>161273</u>	<u>158952</u>
<u>EUROPE</u>	<u>98387</u>	<u>103382</u>	<u>114009</u>	<u>127731</u>	<u>123431</u>
France	26049	27592	27350	31894	31386
UK & Eire	17951	16796	16001	16952	13816
Germany	15509	17011	19265	19421	21222
Italy	17099	18377	23217	25546	23818
Switzerland	4503	4473	4953	5467	5268
Austria	2221	2438	2961	3316	3070
Belgium & Luxembourg	1544	1710	1970	2557	2520
Netherlands	1035	1039	1254	1368	1377
Scandinavia	2788	2304	2836	3313	3325
Spain & Portugal	3024	3091	3757	3959	2851
CIS	4260	4248	5408	7407	8200
Other Europe	2404	4303	5037	6531	6578
<u>AFRICA</u>	<u>12654</u>	<u>12550</u>	<u>13486</u>	<u>16945</u>	<u>19228</u>
Reunion	2458	2167	1770	2347	2834
Mauritius	2345	2626	2579	3159	4086
East Africa ⁽¹⁾	1222	1027	1302	1320	1267
South Africa	5130	5395	6277	8106	8219
Other Southern Africa ⁽²⁾	338	272	318	403	456
Other Africa	1161	1063	1240	1610	2366
<u>ASIA</u>	<u>4981</u>	<u>7933</u>	<u>8885</u>	<u>11665</u>	<u>11292</u>
Israel	180	199	202	2315	1397
Middle East	1972	4474	4783	4932	5424
Indian Sub-continent	1407	1535	1753	1642	1823
Hong Kong	94	68	95	100	91
Japan	300	368	377	489	392
Singapore	231	197	324	371	523
Other Far East	797	1092	1351	1816	1642
<u>OCEANIA</u>	<u>713</u>	<u>922</u>	<u>849</u>	<u>1017</u>	<u>838</u>
<u>AMERICA</u>	<u>4030</u>	<u>3867</u>	<u>3398</u>	<u>3915</u>	<u>4163</u>
USA	3146	2878	2510	2873	3116
Other America	884	989	888	1042	1047

Source: National Statistics Bureau from disembarkation cards

Notes:

(1) East Africa includes: Kenya, Tanzania and Uganda only

(2) Botswana, Lesotho, Swaziland, Namibia, Zambia, Malawi and Zimbabwe

VISITOR ARRIVALS BY COUNTRY OF RESIDENCE AND MONTH, 2008

Table 7

Country of residence	Jan	Feb	Mar	Apr	May	Jun	Jul	Aug	Sep	Oct	Nov	Dec	Cumulative Total
<u>TOTAL</u>	<u>12799</u>	<u>14863</u>	<u>16481</u>	<u>15063</u>	<u>11200</u>	<u>9546</u>	<u>13128</u>	<u>14139</u>	<u>11410</u>	<u>14189</u>	<u>12815</u>	<u>13319</u>	<u>158952</u>
<u>EUROPE</u>	<u>10182</u>	<u>12238</u>	<u>12963</u>	<u>11537</u>	<u>8847</u>	<u>7239</u>	<u>9531</u>	<u>11528</u>	<u>8660</u>	<u>11279</u>	<u>10260</u>	<u>9167</u>	<u>123431</u>
France	2626	3455	3460	3661	2151	1328	2052	2319	1530	3351	3026	2427	31386
UK & Eire	690	1466	1440	1011	1024	1005	1246	1308	1353	1324	909	1040	13816
Germany	1911	2233	2394	1430	1976	1264	1385	1573	1600	2021	2220	1215	21222
Italy	1426	1683	2295	2651	1389	1836	2181	3677	2105	1426	1372	1777	23818
Switzerland	297	488	516	558	380	198	539	292	431	646	537	386	5268
Austria	225	495	292	220	205	139	247	266	191	211	336	243	3070
Belgium & Luxembourg	203	210	369	159	164	194	201	193	133	235	262	197	2520
Netherlands	78	124	67	137	145	69	168	113	145	133	89	109	1377
Scandinavia	311	552	438	131	112	226	303	131	128	431	227	335	3325
Spain & Portugal	140	179	272	213	173	246	288	500	235	241	164	200	2851
Russia	1219	453	559	625	720	325	345	475	316	577	476	479	6569
Other CIS	335	96	139	139	97	86	149	131	77	110	106	166	1631
Other Europe	721	804	722	602	311	323	427	550	416	573	536	593	6578
<u>AFRICA</u>	<u>1609</u>	<u>1274</u>	<u>1866</u>	<u>1631</u>	<u>1272</u>	<u>1238</u>	<u>2087</u>	<u>1497</u>	<u>1455</u>	<u>1585</u>	<u>1539</u>	<u>2175</u>	<u>19228</u>
Reunion	342	146	314	137	184	102	454	189	54	323	248	341	2834
Mauritius	446	299	322	295	276	245	556	327	261	338	388	333	4086
East Africa(1)	115	159	149	80	82	71	85	122	88	104	82	130	1267
South Africa	554	524	773	982	564	620	517	534	798	627	577	1149	8219
Other S Africa(2)	29	44	84	32	33	37	31	39	31	32	29	35	456
Other Africa	123	102	224	105	133	163	444	286	223	161	215	187	2366
<u>ASIA</u>	<u>604</u>	<u>810</u>	<u>1060</u>	<u>1497</u>	<u>720</u>	<u>748</u>	<u>1033</u>	<u>781</u>	<u>896</u>	<u>846</u>	<u>714</u>	<u>1583</u>	<u>11292</u>
Israel	15	14	193	746	27	22	32	18	29	45	31	225	1397
Middle East	216	300	425	469	356	436	562	475	523	466	229	967	5424
Indian Sub Continent	183	113	172	133	172	128	225	136	164	112	88	197	1823
China	39	176	67	29	51	48	53	23	60	72	177	48	843
Other Far East	151	207	203	120	114	114	161	129	120	151	189	146	1805
<u>OCEANIA</u>	<u>98</u>	<u>67</u>	<u>62</u>	<u>93</u>	<u>70</u>	<u>47</u>	<u>75</u>	<u>50</u>	<u>76</u>	<u>56</u>	<u>57</u>	<u>87</u>	<u>838</u>
<u>AMERICA</u>	<u>306</u>	<u>474</u>	<u>530</u>	<u>305</u>	<u>291</u>	<u>274</u>	<u>402</u>	<u>283</u>	<u>323</u>	<u>423</u>	<u>245</u>	<u>307</u>	<u>4163</u>
USA	191	356	372	238	217	198	319	221	275	334	194	201	3116
Other America	115	118	158	67	74	76	83	62	48	89	51	106	1047

Source: National Statistics Bureau from disembarkation cards.

Notes: (1) East Africa includes: Kenya, Tanzania, Uganda. (2) Botswana, Lesotho, Malawi, Namibia, Swaziland, Zambia and Zimbabwe.

QUARTERLY VISITOR ARRIVALS 2006 - 2008

Table 8

Country of Residence	2006					2007					2008				
	Q1	Q2	Q3	Q4	TOTAL	Q1	Q2	Q3	Q4	TOTAL	Q1	Q2	Q3	Q4	TOTAL
GRAND TOTAL	35685	29987	36343	38612	140627	41270	35008	40344	44651	161273	44143	35809	38677	40323	158952
EUROPE TOTAL	29999	23814	29649	30547	114009	34437	27698	32372	33224	127731	35383	27623	29719	30706	123431
France	8553	5241	5534	8022	27350	10018	6716	5910	9250	31894	9541	7140	5901	8804	31386
United Kingdom	3220	3348	5068	3893	15529	4009	3467	5207	3689	16372	3583	3026	3879	3267	13755
Eire (Northern)	95	108	128	141	472	141	137	165	137	580	13	14	28	6	61
Germany	5288	4537	4241	5199	19265	4856	4327	4815	5423	19421	6538	4670	4558	5456	21222
Italy	5347	5179	8218	4473	23217	5850	6149	8541	5006	25546	5404	5876	7963	4575	23818
Switzerland	970	1046	1136	1801	4953	1260	1174	1333	1700	5467	1301	1136	1262	1569	5268
Austria	974	446	621	920	2961	1224	526	792	774	3316	1012	564	704	790	3070
Belgium	487	345	339	532	1703	636	469	418	722	2245	687	465	432	641	2225
Luxembourg	61	57	98	51	267	75	64	92	81	312	95	52	95	53	295
Netherlands	277	233	340	404	1254	252	283	354	479	1368	269	351	426	331	1377
Denmark	403	221	229	294	1147	343	145	311	282	1081	515	145	209	289	1158
Finland	105	52	36	102	295	155	64	91	214	524	219	45	110	183	557
Norway	181	107	132	149	569	160	130	165	201	656	209	107	149	193	658
Sweden	214	125	131	355	825	331	153	136	432	1052	358	172	94	328	952
Portugal	102	158	207	105	572	138	98	201	102	539	96	82	125	53	356
Spain	401	662	1258	864	3185	531	782	1283	824	3420	495	550	898	552	2495
Russia	1355	990	686	1237	4268	1963	1376	969	1623	5931	2231	1670	1136	1532	6569
Ukraine	185	173	113	128	599	227	189	172	180	768	223	162	192	188	765
Estonia	26	5	14	31	76	30	3	6	25	64	19	18	8	18	63
Latvia	37	14	20	61	132	33	37	18	84	172	66	28	26	52	172
Kazakhstan	32	13	26	105	176	74	14	18	89	195	164	23	64	91	342
Belarus	12	7	21	14	54	28	26	22	13	89	45	30	25	3	103
Other USSR	27	17	27	32	103	53	20	46	69	188	53	61	42	30	186
Yugoslavia	45	2	3	1	51	4	1	2	3	10	5	1	2	0	8
Serbia	70	6	8	35	119	107	22	23	20	172	55	20	23	20	118
Croatia	50	14	23	29	116	32	30	27	28	117	21	35	36	19	111
Slovenia	43	20	57	44	164	99	63	40	102	304	107	108	13	60	288
Bosnia & Herzegovina	10	4	1	1	16	2	1	7	11	21	2	3	0	0	5
Other Yugoslavia	3	1	5	0	9	2	1	6	3	12	2	5	11	6	24
Czech Republic	393	136	163	356	1048	440	245	186	462	1333	451	257	236	465	1409
Slovakia Republic	148	23	52	98	321	188	36	32	90	346	186	67	38	91	382
Albania	1	0	2	0	3	6	1	0	0	7	2	0	1	3	6
Iceland	0	13	0	13	26	30	12	6	0	48	28	7	4	6	45
Hungary	177	160	81	143	561	286	383	143	181	993	447	112	129	239	927
Romania	18	51	42	56	167	113	41	68	94	316	114	56	86	81	337
Greece	127	66	328	196	717	242	151	382	185	960	133	134	244	168	679
Poland	152	93	63	339	647	206	156	141	347	850	297	153	192	256	898
Bulgaria	77	24	43	66	210	126	24	34	66	250	85	46	37	44	212
Monaco	36	13	12	34	95	37	18	22	49	126	34	33	36	23	126
Turkey	247	46	65	178	536	78	86	78	117	359	80	38	90	66	274
Cyprus	27	30	40	18	115	28	46	67	32	173	22	29	86	37	174
Other	23	28	38	27	116	24	32	43	35	134	176	132	129	118	555

Table 8 (continued)

Country of Residence	2006					2007					2008				
	Q1	Q2	Q3	Q4	TOTAL	Q1	Q2	Q3	Q4	TOTAL	Q1	Q2	Q3	Q4	TOTAL
AFRICA TOTAL	2815	3138	3061	4472	13486	3835	3922	3796	5392	16945	4749	4141	5039	5299	19228
South Africa	1077	1689	1560	1951	6277	1548	2144	1915	2499	8106	1851	2166	1849	2353	8219
Botswana	39	6	7	13	65	19	26	9	9	63	23	22	13	17	75
Lesotho	1	2	2	3	8	4	6	5	2	17	11	6	7	1	25
Swaziland	0	8	2	6	16	7	10	9	3	29	9	8	7	5	29
Namibia	4	13	6	23	46	15	20	33	33	101	13	16	33	15	77
Zimbabwe	15	43	26	32	116	19	21	21	33	94	29	34	19	23	105
Malawi	0	4	7	4	15	4	1	5	5	15	11	4	9	3	27
Zambia	8	12	15	17	52	6	19	21	38	84	61	12	13	32	118
Kenya	230	213	232	349	1024	216	251	258	329	1054	310	169	229	232	940
Tanzania	43	44	27	46	160	37	36	19	47	139	59	38	43	51	191
Uganda	18	15	23	62	118	21	33	29	44	127	54	26	23	33	136
Reunion	621	263	309	577	1770	722	290	462	873	2347	802	423	697	912	2834
Mauritius	540	564	567	908	2579	780	708	651	1020	3159	1067	816	1144	1059	4086
Senegal	0	6	1	14	21	3	6	12	9	30	5	10	3	6	24
Comoros	3	6	10	7	26	7	5	7	22	41	9	5	5	8	27
Djibouti	5	5	14	23	47	27	13	9	18	67	13	26	24	3	66
Ethiopia	26	10	5	23	64	4	27	12	29	72	33	2	26	17	78
Madagascar	45	75	48	95	263	87	38	50	102	277	78	70	385	154	687
Somalia	0	0	0	0	0	1	1	0	1	3	1	0	2	1	4
Nigeria	15	23	25	58	121	33	51	66	63	213	53	47	131	55	286
Egypt	17	27	18	9	71	10	24	24	24	82	28	11	28	21	88
Libya	0	7	0	0	7	1	8	6	1	16	6	3	4	10	23
Morocco	10	13	46	40	109	23	24	27	30	104	18	23	31	28	100
Sudan	14	9	8	15	46	12	51	11	15	89	26	7	8	17	58
Tunisia	6	4	16	12	38	147	11	25	15	198	37	60	20	28	145
Ivory Coast	3	8	0	11	22	9	3	4	2	18	4	4	7	8	23
Ghana	8	13	16	10	47	8	19	18	11	56	6	12	11	23	52
Gabon	0	0	0	1	1	1	0	2	2	5	1	0	3	0	4
Algeria	2	3	13	5	23	12	1	13	4	30	5	4	11	7	27
Rwanda	0	0	4	5	9	2	3	6	6	17	6	5	5	9	25
DR Congo (Ex-Zaire)	3	4	1	9	17	5	10	10	8	33	9	1	2	12	24
Mozambique	28	9	2	57	96	15	20	8	14	57	17	21	16	18	72
Burundi	7	5	4	7	23	1	5	3	5	14	19	6	30	3	58
Mayotte	9	9	2	26	46	3	14	5	21	43	30	31	176	95	332
Angola	4	11	17	16	48	4	3	6	22	35	19	9	6	10	44
Cameroon	10	7	9	8	34	9	10	14	14	47	9	7	3	11	30
Other	4	8	19	30	61	13	10	21	19	63	17	37	16	19	89

Table 8 (continued)

Country of Residence	2006					2007					2008				
	Q1	Q2	Q3	Q4	TOTAL	Q1	Q2	Q3	Q4	TOTAL	Q1	Q2	Q3	Q4	TOTAL
ASIA TOTAL	1858	2079	2479	2469	8885	1858	2366	2931	4510	11665	2474	2965	2710	3143	11292
Israel	44	50	67	41	202	66	71	506	1672	2315	222	795	79	301	1397
Bahrain	48	40	52	87	227	25	63	82	87	257	41	50	69	79	239
Iran	87	11	16	16	130	35	2	44	19	100	16	14	10	6	46
Iraq	2	1	7	2	12	1	4	2	7	14	0	0	1	0	1
Jordan	17	6	17	8	48	4	16	11	6	37	5	9	9	9	32
Kuwait	37	12	24	34	107	23	14	39	44	120	21	52	34	42	149
Lebanon	21	24	25	51	121	11	72	69	39	191	11	27	66	42	146
Oman	8	19	18	51	96	7	24	30	28	89	16	16	37	17	86
Qatar	83	175	113	127	498	60	107	119	107	393	147	184	153	245	729
Saudi Arabia	185	84	196	126	591	68	140	137	326	671	61	71	114	164	410
Syria	5	3	6	10	24	0	8	3	4	15	7	3	2	5	17
UAE	560	773	825	762	2920	497	798	864	876	3035	606	834	1063	1050	3553
Yemen	0	3	4	2	9	0	0	0	8	8	10	1	2	1	14
Other (Middle East)	0	0	0	0	0	0	0	1	1	2	0	0	0	2	2
Bangladesh	3	8	5	6	22	3	10	9	7	29	5	3	7	9	24
India	248	302	219	363	1132	227	309	261	313	1110	339	295	362	245	1241
Pakistan	28	38	68	27	161	46	58	67	33	204	28	34	39	19	120
Sri Lanka	39	54	88	86	267	43	40	31	81	195	57	70	89	86	302
Madives	35	32	19	51	137	25	28	21	19	93	29	26	15	26	96
Other (Indian Sub-Continent)	3	8	8	15	34	4	2	3	2	11	10	5	13	12	40
China	133	122	205	184	644	344	233	192	297	1066	282	128	136	297	843
Hong Kong	18	11	35	31	95	32	20	21	27	100	32	17	23	19	91
Indonesia	15	20	33	34	102	29	10	8	34	81	22	15	24	44	105
Japan	74	63	129	111	377	86	108	162	133	489	108	71	97	116	392
Korea (Southern)	15	1	16	18	50	19	18	44	35	116	48	12	13	18	91
Malaysia	26	20	34	25	105	35	39	29	36	139	53	36	55	63	207
Singapore	66	48	99	111	324	90	89	106	107	392	164	107	115	137	523
Taiwan	12	16	66	26	120	9	9	13	9	40	8	15	24	20	67
Thailand	15	37	35	24	111	17	42	33	31	123	38	55	24	25	142
Philippines	25	96	47	37	205	32	32	20	99	183	84	18	33	42	177
Other (Far East)	6	2	3	3	14	20	0	4	23	47	4	2	2	2	10

Table 8 (continued)

Country of Residence	2006					2007					2008				
	Q1	Q2	Q3	Q4	TOTAL	Q1	Q2	Q3	Q4	TOTAL	Q1	Q2	Q3	Q4	TOTAL
<u>OCEANIA TOTAL</u>	<u>165</u>	<u>186</u>	<u>233</u>	<u>265</u>	<u>849</u>	<u>210</u>	<u>238</u>	<u>251</u>	<u>318</u>	<u>1017</u>	<u>227</u>	<u>210</u>	<u>201</u>	<u>200</u>	<u>838</u>
Australia	129	156	195	238	718	178	193	211	262	844	192	162	163	180	697
New Zealand	35	29	34	23	121	20	32	35	51	138	28	39	32	13	112
Other	1	1	4	4	10	12	13	5	5	35	7	9	6	7	29
<u>AMERICA TOTAL</u>	<u>848</u>	<u>770</u>	<u>921</u>	<u>859</u>	<u>3398</u>	<u>930</u>	<u>784</u>	<u>994</u>	<u>1207</u>	<u>3915</u>	<u>1310</u>	<u>870</u>	<u>1008</u>	<u>975</u>	<u>4163</u>
Canada	139	73	115	135	462	143	87	107	266	603	212	122	95	172	601
USA	581	592	719	618	2510	700	576	780	817	2873	919	653	815	729	3116
Mexico	6	13	9	3	31	2	9	10	19	40	22	15	11	9	57
W. Indies	15	19	12	15	61	9	28	17	10	64	18	18	7	2	45
Argentina	53	18	17	15	103	42	42	17	30	131	70	25	13	32	140
Brazil	28	29	35	59	151	23	17	49	22	111	40	12	48	23	123
Other	26	26	14	14	80	11	25	14	43	93	29	25	19	8	81

VISITOR DEPARTURES: DISTRIBUTION OF LENGTH OF STAY, 1999-2008

Table 9

	Length of stay (% nights)									Total	Average length of stay (nights)	
	0	1 - 2	3 - 6	7 - 8	9 - 13	14 - 15	16 - 20	21 - 28	29+			
1999	3	4	20	24	28	11	5	4	2	100	10.4	
2000	2	3	21	23	28	12	5	3	2	100	10.4	
2001	2	4	18	27	28	12	5	3	2	100	10.4	
2002	2	4	21	22	31	9	5	3	2	100	10.1	
2003	2	4	21	22	33	10	5	3	1	100	10.1	
2004	2	4	21	22	33	9	5	2	2	100	10.0	
2005	3	5	20	23	30	11	4	3	1	100	9.7	
2006	2	4	19	24	30	12	4	3	1	100	9.8	
2007	1	4	20	25	31	12	4	2	1	100	9.9	
2008	1	4	20	23	32	11	4	3	2	100	10.1	
<u>2007</u>												
Jan	2	3	15	25	35	11	5	3	2	100	10.2	
Feb	4	8	20	24	28	9	3	2	1	100	8.9	
Mar	2	4	20	25	30	11	4	2	1	100	9.7	
Apr	0	2	19	29	31	12	3	2	1	100	9.9	
May	0	2	21	28	30	11	3	2	2	100	10.0	
Jun	0	3	23	22	31	14	3	2	2	100	10.1	
Jul	0	2	18	25	34	13	5	3	1	100	10.4	
Aug	1	4	14	19	34	16	7	4	2	100	11.1	
Sep	0	2	19	23	32	15	3	2	2	100	10.5	
Oct	1	6	24	22	28	11	3	2	1	100	9.0	
Nov	0	3	21	26	30	11	5	2	1	100	9.7	
Dec	2	5	21	27	27	10	4	3	2	100	9.6	
<u>2008</u>												
Jan	5	7	15	21	33	9	5	3	1	100	9.5	
Feb	2	9	20	26	27	9	3	3	2	100	9.2	
Mar	1	2	19	28	31	12	3	2	2	100	10.3	
Apr	0	2	25	23	31	11	4	2	2	100	10.0	
May	0	2	18	26	34	12	3	2	2	100	10.2	
Jun	0	3	23	23	32	12	3	2	2	100	10.3	
Jul	0	3	18	21	34	13	6	3	1	100	10.6	
Aug	0	2	15	18	36	15	7	5	2	100	11.3	
Sep	0	3	19	22	34	13	5	2	2	100	10.7	
Oct	0	3	22	23	34	11	4	2	1	100	9.9	
Nov	0	4	19	24	33	11	4	2	1	100	10.0	
Dec	0	4	27	25	25	10	4	3	2	100	9.8	

Source: National Statistics Bureau from disembarkation cards.

VISITOR ARRIVALS BY MODE OF TRANSPORT, 2007 - 2008

Table 10

Number of visitors

<u>Year/Month</u>	TRANSIT			NON - TRANSIT			TOTAL VISITORS		
	Air	Sea	Total	Air	Sea	Total	Air	Sea	Total
<u>2007</u>									
January	205	15	220	10903	47	10950	11108	62	11170
February	696	484	1180	13296	67	13363	13992	551	14543
March	250	295	545	14875	137	15012	15125	432	15557
April	31	31	62	14594	53	14647	14625	84	14709
May	59	2	61	9853	53	9906	9912	55	9967
June	34	21	55	10229	48	10277	10263	69	10332
July	33	6	39	13627	38	13665	13660	44	13704
August	383	212	595	13354	200	13554	13737	412	14149
September	11	183	194	12276	21	12297	12287	204	12491
October	688	3	691	15968	70	16038	16656	73	16729
November	68	202	270	12935	85	13020	13003	287	13290
December	136	113	249	14234	149	14383	14370	262	14632
Total	2594	1567	4161	156144	968	157112	158738	2535	161273
<u>2008</u>									
January	939	604	1543	11211	45	11256	12150	649	12799
February	781	378	1159	13138	566	13704	13919	944	14863
March	153	126	279	15941	261	16202	16094	387	16481
April	28	9	37	14941	85	15026	14969	94	15063
May	40	12	52	11100	48	11148	11140	60	11200
June	24	2	26	9502	18	9520	9526	20	9546
July	20	3	23	13050	55	13105	13070	58	13128
August	77	9	86	14024	29	14053	14101	38	14139
September	18	4	22	11336	52	11388	11354	56	11410
October	25	0	25	14129	35	14164	14154	35	14189
November	95	151	246	12488	81	12569	12583	232	12815
December	90	20	110	13136	73	13209	13226	93	13319
Total	2290	1318	3608	153996	1348	155344	156286	2666	158952

Source: National Statistics Bureau from disembarkation cards.

VISITORS STAY BY LOCATION, 2007 - 2008

Table 11(a)

		Mahe	%	Praslin	%	La Digue	%	Other Islands	%	On Vessel(1)	%	Total	%
January	2007	6005	54%	2657	24%	522	5%	962	9%	1024	9%	11170	100%
	2008	6466	51%	2744	21%	635	5%	973	8%	1981	15%	12799	100%
February	2007	7061	49%	3472	24%	672	5%	1403	10%	1935	13%	14543	100%
	2008	6607	44%	3644	25%	676	5%	1176	8%	2760	19%	14863	100%
March	2007	7621	49%	3807	24%	751	5%	1629	10%	1749	11%	15557	100%
	2008	7766	47%	4281	26%	1033	6%	1664	10%	1737	11%	16481	100%
April	2007	7057	48%	3977	27%	804	5%	1927	13%	944	6%	14709	100%
	2008	6698	44%	4031	27%	1004	7%	2007	13%	1323	9%	15063	100%
May	2007	4873	49%	2724	27%	507	5%	1106	11%	757	8%	9967	100%
	2008	5447	49%	3090	28%	758	7%	943	8%	962	9%	11200	100%
June	2007	5331	52%	2725	26%	587	6%	1142	11%	547	5%	10332	100%
	2008	4821	51%	2665	28%	669	7%	803	8%	588	6%	9546	100%
July	2007	7075	52%	3526	26%	872	6%	1554	11%	677	5%	13704	100%
	2008	7027	54%	3469	26%	887	7%	997	8%	748	6%	13128	100%
August	2007	6810	48%	3421	24%	911	6%	1634	12%	1373	10%	14149	100%
	2008	6991	49%	3928	28%	831	6%	1609	11%	780	6%	14139	100%
September	2007	6528	52%	3166	25%	822	7%	1278	10%	697	6%	12491	100%
	2008	5789	51%	3005	26%	814	7%	1168	10%	634	6%	11410	100%
October	2007	9129	55%	3671	22%	747	4%	1950	12%	1232	7%	16729	100%
	2008	7072	50%	3653	26%	942	7%	1500	11%	1022	7%	14189	100%
November	2007	7257	55%	3015	23%	652	5%	1124	8%	1242	9%	13290	100%
	2008	6440	50%	3086	24%	692	5%	1466	11%	1131	9%	12815	100%
December	2007	7707	53%	3421	23%	697	5%	1536	10%	1271	9%	14632	100%
	2008	7102	53%	3041	23%	708	5%	1592	12%	876	7%	13319	100%
Total	2007	82454	51%	39582	25%	8544	5%	17245	11%	13448	8%	161273	100%
	2008	78226	49%	40637	26%	9649	6%	15898	10%	14542	9%	158952	100%

(1) Includes yachts, cruise ship and sea bound vessels.

VISITORS STAY BY ACCOMMODATION, 2007 - 2008

Table 11(b)

		Hotels(1)	%	Friends	%	Yachts	%	Cruise Ships	%	Others	%	Total	%
January	2007	9323	83%	662	6%	654	6%	328	3%	203	2%	11170	100%
	2008	9736	76%	963	8%	938	7%	1032	8%	130	1%	12799	100%
February	2007	11623	80%	851	6%	937	6%	954	7%	178	1%	14543	100%
	2008	11065	74%	878	6%	1138	8%	1621	11%	161	1%	14863	100%
March	2007	12656	81%	974	6%	1042	7%	674	4%	211	1%	15557	100%
	2008	13411	81%	1167	7%	1360	8%	373	2%	170	1%	16481	100%
April	2007	12517	85%	1071	7%	911	6%	6	0%	204	1%	14709	100%
	2008	12721	84%	871	6%	1307	9%	13	0%	151	1%	15063	100%
May	2007	8442	85%	619	6%	761	8%	0	0%	145	1%	9967	100%
	2008	9244	83%	875	8%	952	9%	0	0%	129	1%	11200	100%
June	2007	8903	86%	756	7%	544	5%	0	0%	129	1%	10332	100%
	2008	8001	84%	800	8%	584	6%	0	0%	161	2%	9546	100%
July	2007	11749	86%	1185	9%	670	5%	0	0%	100	1%	13704	100%
	2008	10355	79%	1119	9%	747	6%	0	0%	907	7%	13128	100%
August	2007	11709	83%	956	7%	625	4%	745	5%	114	1%	14149	100%
	2008	12022	85%	1064	8%	767	5%	0	0%	286	2%	14139	100%
September	2007	10931	88%	729	6%	518	4%	154	1%	159	1%	12491	100%
	2008	9846	86%	703	6%	633	6%	0	0%	228	2%	11410	100%
October	2007	14165	85%	944	6%	1044	6%	173	1%	403	2%	16729	100%
	2008	11879	84%	1005	7%	1020	7%	2	0%	283	2%	14189	100%
November	2007	11144	84%	742	6%	951	7%	292	2%	161	1%	13290	100%
	2008	10296	80%	979	8%	821	6%	276	2%	443	3%	12815	100%
December	2007	11818	81%	1385	9%	1048	7%	221	2%	160	1%	14632	100%
	2008	10694	80%	1542	12%	829	6%	33	0%	221	2%	13319	100%
Total	2007	134980	84%	10874	7%	9705	6%	3547	2%	2167	1%	161273	100%
	2008	129270	81%	11966	8%	11096	7%	3350	2%	3270	2%	158952	100%

Source: National Statistics Bureau from disembarkation cards

(1) Includes guest houses & self-catering establishments.

**RESIDENTIAL STATUS AND INTENTION OF MIGRANTS
2004 - 2008**

Table 12

Type	2004	2005	2006	2007	2008
<u>LONG TERM MIGRANTS</u>					
<u>ARRIVALS</u>					
Returning residents ⁽¹⁾	1791	1937	2080	2184	2273
New immigrants ⁽²⁾	533	734	861	2489	5007
<u>DEPARTURES</u>					
Permanent leavers					
- Seychellois	917	938	962	872	1042
- Other ⁽³⁾	846	1064	1186	1547	3534
Intention to return after a year or more	908	1014	1066	1204	1296
<u>ARRIVALS MINUS DEPARTURES</u>					
Long-term migrants	-347	-345	-273	1050	1408
Short-term migrants	1658	2640	3649	2697	1127
Residents (short absences)	-1695	-2906	-2966	-3276	-1613
TOTAL	-384	-611	410	471	922

Source: National Statistics Bureau from disembarkation and embarkation cards.

Notes:

(1) Residents returning after an absence of more than 12 months

(2) Intending to stay for more than 12 months

(3) Residents for more than 12 months

DEPARTURE OF RESIDENTS BY PURPOSE OF VISIT, 2008

Table 13

	LONG TERM DEPARTURES (more than 1 year)			SHORT TERM DEPARTURES (less than 1 year)			
Purpose of visit	Seychellois	Non Seychellois	Total long term	Seychellois	Non Seychellois	Total short term	Total Departures
Holiday	328	3	331	22597	11505	34102	34433
Emigration	1315	850	2165	42	6	48	2213
Education	447	31	478	1168	98	1266	1744
Business/Employment	191	32	223	4859	1942	6801	7024
End of contract	0	4721	4721	0	555	555	5276
Medical treatment	4	1	5	1162	153	1315	1320
Other	33	7	40	1911	118	2029	2069
TOTAL	2318	5645	7963	31739	14377	46116	54079

Source: National Statistics Bureau from embarkation cards.

DEPARTURE OF RESIDENTS BY CONTINENT OF DESTINATION, 2008

Table 14

	LONG TERM DEPARTURES (more than 1 year)			SHORT TERM DEPARTURES (less than 1 year)			
Continent of destination	Seychellois	Non Seychellois	Total long term	Seychellois	Non Seychellois	Total short term	Total Departures
Europe	1298	992	2290	6219	4419	10638	12928
Africa	261	764	1025	14042	5188	19230	20255
Asia	419	3589	4008	11054	4523	15577	19585
Oceania	173	165	338	218	106	324	662
America	167	135	302	206	141	347	649
TOTAL	2318	5645	7963	31739	14377	46116	54079

Source: National Statistics Bureau from embarkation cards.

AGE AND SEX DISTRIBUTION OF MIGRANTS, 2008

Table 15

Sex/Age	<u>MALES</u>					<u>FEMALES</u>					TOTAL
	0-14	15 - 29	30 - 44	45 - 64	65+	0 - 14	15 - 29	30 - 44	45 - 64	65+	
<u>LONG-TERM MIGRANTS</u>											
<u>ARRIVALS</u>											
Returning residents	164	241	236	225	67	169	285	342	460	84	2273
New immigrants	48	2026	2086	545	6	40	117	98	38	3	5007
<u>DEPARTURES</u>											
Permanent:											
Seychellois	61	94	118	122	34	66	127	174	209	37	1042
Other	72	1158	1219	488	20	73	147	230	114	13	3534
Intention to return after one year or more	87	225	144	89	16	88	285	177	166	19	1296
<u>NET MIGRATION</u>											
Long-term migrants	-8	790	841	71	3	-18	-157	-141	9	18	1408
Short-term migrants	-34	255	657	545	-18	-22	-56	-66	-108	-26	1127
Residents (short absences)	81	-467	-1119	-533	-8	12	124	43	238	16	-1613
TOTAL NET MIGRATION	39	578	379	83	-23	-28	-89	-164	139	8	922

Source: National Statistics Bureau from disembarkation and embarkation cards.

RESIDENT DEPARTURES BY COUNTRY OF DESTINATION, 2008

Table 16

PERMANENT DEPARTURE OF SEYCHELLOIS AND NON-SEYCHELLOIS (More than one year)																											
Country of Destination	Jan		Feb		Mar		Apr		May		Jun		Jul		Aug		Sep		Oct		Nov		Dec		Total		Total
	Sev	Non-Sev	Sev	Non-Sev	Sev	Non-Sev	Sev	Non-Sev	Sev	Non-Sev	Sev	Non-Sev	Sev	Non-Sev	Sev	Non-Sev	Sev	Non-Sev	Sev	Non-Sev	Sev	Non-Sev	Sev	Non-Sev	Sev	Non-Sev	
Europe	229	223	71	94	72	52	92	71	81	35	64	59	98	67	224	141	153	63	72	56	83	76	59	55	1298	992	2290
France	17	11	7	27	6	16	10	9	7	4	6	11	15	17	56	34	26	18	9	7	9	3	11	169	184	353	
U.K & Eire	134	74	39	34	33	22	52	35	49	19	37	24	58	26	96	72	82	19	38	23	52	35	39	25	709	408	1117
Germany	9	4	2	4	6	3	7	4	7	2	6	3	7	4	18	7	10	3	3	5	5	3	5	7	85	49	134
Italy	50	17	18	7	16	2	15	11	10	4	8	2	8	9	25	7	28	8	12	3	11	8	9	2	210	80	290
Scandinavia	3	2	1	2	1	0	0	2	0	4	1	0	2	0	4	2	0	0	3	0	3	9	0	0	18	17	35
Other Europe	16	115	4	20	10	9	8	10	8	6	6	19	8	11	25	19	7	15	7	8	5	12	3	10	107	254	361
Africa	64	55	32	50	25	65	8	58	12	72	7	48	29	76	31	67	11	64	12	42	10	81	20	86	261	764	1025
South Africa	27	9	5	7	10	10	2	17	3	18	1	10	13	4	8	6	1	9	4	8	3	19	3	25	80	142	222
Kenya	5	2	3	12	2	3	1	9	5	13	0	8	2	7	0	10	1	4	1	2	1	3	3	14	24	87	111
Reunion	1	0	0	0	0	1	0	0	0	2	0	0	0	4	1	0	1	2	3	2	0	0	0	0	6	11	17
Mauritius	30	34	23	12	11	28	3	17	4	32	6	12	13	41	16	38	7	27	3	16	3	39	14	31	133	327	460
Madagascar	0	2	1	15	0	4	0	2	0	2	0	7	0	3	0	5	0	6	0	2	0	6	0	9	1	63	64
Other Africa	1	8	0	4	2	19	2	13	0	5	0	11	1	17	6	8	1	16	1	12	3	14	0	7	17	134	151
Asia	61	212	46	254	33	221	34	301	22	284	39	239	23	284	59	235	40	246	30	254	19	574	13	485	419	3589	4008
UAE (Dubai)	19	2	15	4	5	1	18	1	10	0	9	3	7	3	16	8	6	2	12	10	6	7	7	3	130	44	174
Qatar	2	1	2	0	0	1	3	1	1	1	4	2	2	1	7	2	1	0	2	1	3	3	1	4	28	17	45
Other Middle East	8	3	8	1	7	1	4	4	3	1	4	0	1	16	4	3	0	7	0	5	5	2	2	2	68	22	90
India	2	141	1	178	7	172	1	253	8	236	12	195	6	191	3	173	5	190	3	171	1	279	0	308	49	2487	2536
Other Indian Sub Continent	2	13	2	15	1	19	1	14	0	24	0	11	0	30	1	27	0	29	0	31	0	205	0	74	7	492	499
Singapore	15	2	9	0	10	0	3	2	0	1	0	6	0	10	1	6	2	4	1	4	3	2	2	1	70	12	82
Other Far East	13	50	9	56	3	27	4	26	0	22	9	28	1	58	6	20	19	23	2	40	0	72	1	93	67	515	582
Oceania	36	36	57	4	16	10	7	14	3	8	7	15	15	11	7	17	3	17	12	9	8	10	2	14	173	165	338
Australia	33	36	56	4	16	10	6	14	3	8	7	12	14	11	6	17	3	17	12	8	5	10	2	13	163	160	323
Other Oceania	3	0	1	0	0	0	1	0	0	0	3	1	0	1	0	0	0	0	1	3	0	0	0	1	10	5	15
America	53	20	7	9	9	11	9	15	4	7	12	5	25	13	12	26	14	10	8	11	5	6	9	2	167	135	302
Canada	40	12	5	4	8	6	4	2	3	3	7	0	9	7	4	12	5	1	7	0	1	1	7	0	100	48	148
Other America	13	8	2	5	1	5	5	13	1	4	5	5	16	6	8	14	9	9	1	11	4	5	2	2	67	87	154
Total	443	546	213	411	155	359	150	459	122	406	129	366	190	451	333	486	221	400	134	372	125	747	103	642	2318	5645	7963

TEMPORARY DEPARTURE OF SEYCHELLOIS AND NON-SEYCHELLOIS (Less than one year)																											
Country of Destination	Jan		Feb		Mar		Apr		May		Jun		Jul		Aug		Sep		Oct		Nov		Dec		Total		Total
	Sev	Non-Sev	Sev	Non-Sev	Sev	Non-Sev	Sev	Non-Sev	Sev	Non-Sev	Sev	Non-Sev	Sev	Non-Sev	Sev	Non-Sev	Sev	Non-Sev	Sev	Non-Sev	Sev	Non-Sev	Sev	Non-Sev	Sev	Non-Sev	
Europe	450	348	325	323	416	341	474	323	414	310	632	335	851	457	697	457	540	351	410	346	444	355	566	473	6219	4419	10638
France	103	125	89	108	109	135	77	98	91	110	188	156	189	162	114	157	132	106	117	96	115	111	139	150	1463	1514	2977
U.K & Eire	220	68	143	53	181	45	251	68	192	49	257	57	441	74	383	84	269	51	200	60	229	65	300	99	3066	773	3839
Germany	21	13	19	11	54	26	36	9	32	18	38	16	47	21	38	20	23	14	22	11	32	12	17	20	379	191	570
Italy	67	29	42	16	30	18	73	29	40	25	88	24	116	27	96	19	77	29	43	30	38	21	71	23	781	290	1071
Scandinavia	2	0	4	1	3	0	4	0	3	0	4	0	6	0	10	1	6	1	3	3	2	3	3	3	50	12	62
Other Europe	37	113	28	134	39	117	33	119	56	108	57	82	52	173	56	176	33	150	25	146	28	143	36	178	480	1639	2119
Africa	809	378	876	350	1066	392	1334	383	1114	457	1280	492	1155	438	1179	420	997	365	1244	418	1337	452	1651	643	14042	5188	19230
South Africa	143	72	162	54	180	76	179	64	198	73	118	69	189	91	206	68	129	69	171	91	329	91	199	147	2203	965	3168
Kenya	29	35	24	19	76	33	63	38	48	46	69	35	52	31	58	50	82	36	59	26	71	41	53	74	684	464	1148
Reunion	20	14	14	6	15	11	50	18	24	6	22	14	18	9	36	11	16	7	15	4	38	13	27	23	295	136	431
Mauritius	583	110	619	107	752	130	981	148	746	158	999	199	845	154	842	132	711	128	907	137	855	131	1335	203	10175	1737	11912
Madagascar	5	19	14	36	4	22	23	27	11	53	14	92	12	35	10	28	12	24	10	24	5	33	13	71	133	464	597
Other Africa	29	128	43	128	39	120	38	88	87	121	58	83	39	118	27	131	47	101	82	136	39	143	24	125	552	1422	1974
Asia	911	366	743	292	953	373	1094	367	819	477	1183	362	943	322	1025	368	786	312	909	358	661	342	1027	584	11054	4523	15577
UAE (Dubai)	230	18	261	45	317	48	376	30	287	37	343	56	333	36	292	52	212	32	390	45	235	36	376	49	3652	484	4136

RESIDENT DEPARTURES BY PURPOSE OF VISIT, 2008

Table 17

PERMANENT DEPARTURE OF SEYCHELLOIS AND NON-SEYCHELLOIS

(More than one year)

Purpose of Visit	Holiday		Emigration		Business		Education		Med. Treatment		Employment		End of Cont.		Others		Total		Total		
	Sey	Non-Sey	Sey	Non-Sey	Sey	Non-Sey	Sey	Non-Sey	Sey	Non-Sey	Sey	Non-Sey	Sey	Non-Sey	Sey	Non-Sey	Sey	Non-Sey			
January	82	0	245	154	12	12	90	1	0	0	12	0	0	379	2	0			443	546	989
February	40	0	75	61	7	5	78	5	0	0	9	0	0	340	4	0			213	411	624
March	19	1	89	49	5	1	28	1	0	0	12	0	0	305	2	2			155	359	514
April	30	0	86	70	2	1	9	3	2	1	15	0	0	384	6	0			150	459	609
May	13	0	96	40	2	0	4	1	0	0	7	0	0	365	0	0			122	406	528
June	16	0	78	54	3	0	22	0	0	0	10	0	0	312	0	0			129	366	495
July	27	0	116	63	3	0	27	1	0	0	17	0	0	387	0	0			190	451	641
August	51	0	184	155	4	0	69	1	0	0	21	0	0	330	4	0			333	486	819
September	12	0	107	53	1	0	86	0	2	0	11	0	0	347	2	0			221	400	621
October	9	2	76	46	5	3	23	8	0	0	10	0	0	309	11	4			134	372	506
November	10	0	98	55	2	8	4	1	0	0	10	0	0	682	1	1			125	747	872
December	19	0	65	50	2	2	7	9	0	0	9	0	0	581	1	0			103	642	745
Total	328	3	1315	850	48	32	447	31	4	1	143	0	0	4721	33	7			2318	5645	7963

TEMPORARY DEPARTURE OF SEYCHELLOIS AND NON-SEYCHELLOIS

(Less than one year)

Purpose of Visit	Holiday		Emigration		Business		Education		Med. Treatment		Employment		End of Cont.		Others		Others/ Sport		Total		Total
	Sey	Non-Sey	Sey	Non-Sey	Sey	Non-Sey	Sey	Non-Sey	Sey	Non-Sey	Sey	Non-Sey	Sey	Non-Sey	Sey	Non-Sey	Sey	Non-Sey	Sey	Non-Sey	
January	1555	904	0	0	289	125	133	13	98	18	3	1	0	41	119	0	11	13	2208	1115	3323
February	1289	754	0	0	341	166	78	9	99	12	1	0	0	33	114	0	55	15	1977	989	2966
March	1644	862	16	1	459	175	67	4	107	11	15	0	0	42	81	6	68	14	2457	1115	3572
April	2153	858	1	0	462	165	66	8	109	6	6	0	0	54	60	3	79	2	2936	1096	4032
May	1521	992	0	0	491	185	127	5	105	11	1	0	0	55	74	2	59	12	2378	1262	3640
June	2258	975	0	0	461	174	129	12	120	8	2	0	0	34	99	2	68	6	3137	1211	4348
July	2233	1039	0	0	368	134	111	3	85	11	0	0	0	35	74	1	123	3	2994	1226	4220
August	2242	1048	2	1	355	125	126	16	80	15	5	0	0	43	65	1	59	7	2934	1256	4190
September	1544	783	1	1	425	199	114	3	94	19	3	0	0	35	113	5	63	4	2357	1049	3406
October	1632	872	22	3	466	177	93	4	108	19	7	0	0	51	151	3	120	13	2599	1142	3741
November	1651	907	0	0	478	190	96	9	100	18	0	0	0	55	84	0	56	1	2465	1180	3645
December	2875	1511	0	0	211	126	28	12	57	5	10	0	0	77	83	1	33	4	3297	1736	5033
Total	22597	11505	42	6	4806	1941	1168	98	1162	153	53	1	0	555	1117	24	794	94	31739	14377	46116

Source: National Statistics Bureau from disembarkation cards

BED AND ROOM OCCUPANCY RATES BY TYPE OF ACCOMMODATION AND LOCATION, 2008

Table 18

	Jan	Feb	Mar	Apr	May	Jun	Jul	Aug	Sep	Oct	Nov	Dec	Year
<u>BED OCCUPANCY (%)</u>	55	57	63	62	56	51	56	65	53	60	54	50	57
Hotels and Self catering	59	60	67	66	61	56	59	69	57	64	57	50	60
Mahe	62	66	69	66	63	59	57	65	55	64	56	51	61
Praslin	59	59	69	69	61	59	67	73	63	69	61	52	64
La Digue	51	47	63	61	58	45	64	79	66	64	53	40	58
Other Islands	49	46	52	64	48	35	36	71	43	50	48	50	50
Guest and Private houses	40	47	48	47	42	35	45	50	41	48	46	53	45
Mahe	38	40	37	36	35	30	43	41	36	43	45	53	40
Praslin	39	50	51	41	35	30	36	48	37	43	42	50	42
La Digue	34	47	51	52	55	45	46	59	47	54	50	52	49
Other Islands	54	58	61	71	55	43	61	63	52	62	48	55	57
<u>ROOM OCCUPANCY(%)</u>	57	62	65	65	60	54	58	68	58	64	58	53	60
Hotels and Self catering	61	66	71	70	65	59	61	73	63	69	61	53	64
Mahe	69	76	77	74	71	65	62	71	62	73	64	55	68
Praslin	55	62	72	69	62	59	66	76	65	70	63	53	64
La Digue	51	48	62	61	58	46	65	81	68	65	55	43	59
Other Islands	44	45	51	64	48	37	36	73	54	52	50	44	51
Guest and Private houses	42	50	46	47	43	38	47	51	43	50	48	54	47
Mahe	40	45	34	38	52	37	47	44	40	47	47	56	44
Praslin	43	51	51	42	36	31	40	50	39	42	44	51	43
La Digue	36	49	50	51	53	44	48	58	46	55	52	54	50
Other Islands	54	57	62	67	52	43	59	62	55	63	51	56	57

Source: National Statistics Bureau (Hotel returns).

BEDS AVAILABLE AND BED-NIGHTS OCCUPIED BY TYPE OF ACCOMMODATION AND LOCATION, 2007 - 2008

Table 19

		Jan	Feb	Mar	Apr	May	Jun	Jul	Aug	Sep	Oct	Nov	Dec	Year
AVE. NO OF BEDS AVAILABLE	2007	5520	5550	5530	5490	5440	5240	5440	5490	5440	5480	5430	5500	5460
	2008	5120	4920	4980	4890	4480	4230	4710	4980	4910	4980	4950	4880	4840
Hotels and self catering	2007	4330	4370	4370	4350	4310	4240	4290	4360	4290	4330	4310	4410	4330
	2008	3970	3790	3840	3770	3360	3160	3580	3840	3750	3790	3820	3790	3710
Mahe	2007	2390	2430	2400	2420	2410	2350	2370	2430	2400	2440	2430	2450	2410
	2008	2050	1810	1830	1820	1590	1530	1820	1840	1830	1840	1830	1840	1800
Other Islands	2007	1930	1940	1970	1930	1900	1880	1900	1920	1890	1880	1880	1960	1920
	2008	1920	1980	2010	1940	1770	1640	1760	2000	1920	1950	1990	1950	1900
Guest and Private houses	2007	1200	1160	1170	1130	1130	1000	1140	1130	1130	1140	1110	1070	1130
	2008	1150	1120	1140	1120	1120	1060	1130	1150	1170	1190	1130	1080	1130
Mahe	2007	500	490	460	440	430	330	430	410	420	420	420	420	430
	2008	450	440	430	440	430	390	480	460	460	460	460	460	450
Other Islands	2007	700	680	710	690	710	670	720	730	720	720	700	650	700
	2008	700	690	700	690	690	670	650	690	710	730	670	620	680
BED-NIGHTS OCCUPIED (000)	2007	87.4	87.8	102.4	97.3	80.4	75.6	97.9	110.9	90.1	107.5	95.7	82.7	1116
	2008	86.9	81.4	96.4	90.6	78.0	64.3	81.4	100.2	78.6	92.9	80.3	76.2	1007
Hotels and self catering	2007	72.7	71.9	83.4	80.5	67.0	64.9	81.2	90.7	74.3	89.7	78.1	68.2	923
	2008	72.6	66.1	79.6	74.9	63.3	53.0	65.6	82.5	64.1	75.2	64.8	58.6	820
Mahe	2007	43.3	38.8	45.5	43.3	33.4	32.3	39.9	44.5	38.0	49.2	42.3	40.5	491
	2008	39.5	34.7	39.5	35.9	31.2	27.1	32.1	37.3	30.3	36.7	30.7	29.0	404
Other Islands	2007	29.5	33.1	37.9	36.9	33.6	32.5	41.4	46.2	36.3	40.5	35.9	27.7	431
	2008	33.0	31.4	40.1	39.0	32.1	25.9	33.5	45.2	33.8	38.5	34.2	29.5	416
Guest and Private houses	2007	14.7	15.8	19.0	17.0	13.5	10.7	16.7	20.2	15.9	17.8	17.5	14.4	193
	2008	14.3	15.3	16.8	15.7	14.7	11.3	15.8	17.7	14.5	17.6	15.5	17.6	187
Mahe	2007	5.4	6.2	6.3	5.4	4.3	2.6	4.8	5.8	5.1	5.9	6.1	5.3	63
	2008	5.3	5.0	4.9	4.7	4.7	3.5	6.5	5.8	5.0	6.1	6.1	7.6	65
Other Islands	2007	9.2	9.7	12.7	11.5	9.1	8.1	11.9	14.4	10.8	11.9	11.5	9.2	130
	2008	9.0	10.3	11.9	11.0	10.1	7.8	9.3	11.9	9.5	11.5	9.3	10.0	122

BED AND ROOM OCCUPANCY RATES BY TYPE OF ACCOMMODATION AND LOCATION, 2007-2008

Table 20

		Jan	Feb	Mar	Apr	May	Jun	Jul	Aug	Sep	Oct	Nov	Dec	Year
<u>BED OCCUPANCY (%)</u>	2007	51	57	60	59	48	48	58	65	55	63	59	48	56
	2008	55	57	63	62	56	51	56	65	53	60	54	50	57
<u>Hotels and self catering</u>	2007	54	59	62	62	50	51	61	67	58	67	60	50	58
	2008	59	60	67	66	61	56	59	69	57	64	57	50	60
Mahe	2007	58	57	61	60	45	46	54	59	53	65	58	53	56
	2008	62	66	69	66	63	59	57	65	55	64	56	51	61
Other Islands	2007	49	61	62	64	57	58	70	77	64	69	64	46	62
	2008	55	55	65	67	59	53	61	73	59	64	57	49	60
<u>Guest and Private houses</u>	2007	40	49	52	50	38	34	46	58	46	46	52	43	46
	2008	40	47	48	47	42	35	45	50	41	48	46	53	45
Mahe	2007	35	44	44	42	33	27	37	48	41	42	49	40	41
	2008	38	40	37	36	35	30	43	41	36	42	45	53	40
Other Islands	2007	43	51	58	56	41	38	52	63	49	48	54	45	50
	2008	42	52	54	54	47	39	46	56	44	51	46	52	49
<u>ROOM OCCUPANCY(%)</u>	2007	54	59	63	61	51	50	58	62	57	65	62	52	58
	2008	57	62	65	65	60	54	58	68	58	64	58	53	60
<u>Hotels and self catering</u>	2007	56	62	65	63	53	53	62	63	61	70	65	55	61
	2008	61	66	71	70	65	59	61	73	63	69	61	53	64
Mahe	2007	60	63	66	63	49	50	57	56	57	72	65	59	60
	2008	69	76	77	74	71	65	62	71	62	73	64	55	68
Other Islands	2007	52	60	64	63	57	57	68	73	65	68	64	49	62
	2008	52	56	66	67	59	54	60	76	63	65	59	50	61
<u>Guest and Private houses</u>	2007	43	51	57	51	42	37	44	58	43	47	52	44	48
	2008	42	50	46	47	43	38	47	51	43	50	48	54	47
Mahe	2007	41	50	51	44	39	33	40	51	43	45	51	47	45
	2008	40	45	34	38	38	37	47	44	40	47	47	56	43
Other Islands	2007	44	51	61	55	43	39	47	62	44	49	52	42	49
	2008	44	52	54	52	46	38	47	56	45	52	48	53	49

Source: National Statistics Bureau (Hotel returns).

**BED-NIGHTS OCCUPIED AND BED-OCCUPANCY RATES BY SIZE OF ESTABLISHMENT
MAHE AND OTHER ISLANDS, 2007 - 2008**

Table 21

<u>AVERAGE NO OF BEDS</u>	<u>HOTELS ON MAHE</u>				<u>HOTELS</u>	
	<u>LARGE HOTELS (1)</u>		<u>OTHER</u>		<u>OTHER ISLANDS</u>	
	<u>2007</u>	<u>2008</u>	<u>2007</u>	<u>2008</u>	<u>2007</u>	<u>2008</u>
<u>AVAILABLE</u>	2110	1470	730	790	2610	2580
<u>BED-NIGHTS OCCUPIED</u> ('000)						
January	40.0	34.9	8.8	9.9	38.7	42.1
February	35.2	30.3	9.8	9.5	42.8	41.7
March	40.9	34.5	10.9	9.9	50.6	52.0
April	39.7	31.4	9.3	9.2	48.4	50.0
May	30.3	27.0	7.4	8.8	42.8	42.2
June	29.2	23.5	5.8	7.1	40.6	33.7
July	35.6	27.7	9.1	10.9	53.3	42.8
August	39.9	31.9	10.5	11.2	60.5	57.2
September	34.8	26.3	8.3	9.0	47.1	43.3
October	44.8	32.5	10.2	10.3	52.4	50.1
November	37.6	26.5	10.6	10.3	47.3	43.5
December	35.7	24.7	10.1	12.0	36.9	39.5
YEAR	444	351	111	118	561	538
<u>BED-OCCUPANCY RATES (%)</u>						
January	61	66	37	41	48	52
February	59	71	45	42	58	54
March	63	75	46	41	61	62
April	63	71	41	39	62	63
May	46	70	33	37	53	55
June	47	64	32	34	53	49
July	55	60	41	43	66	57
August	60	68	49	45	74	69
September	55	59	39	38	60	55
October	68	70	44	41	65	60
November	60	59	48	43	61	54
December	54	53	41	48	46	50
YEAR	58	65	42	41	59	57

Source: National Statistics Bureau

Notes:(1) Hotels on Mahe with 50 or more beds

BEDS, BED-NIGHTS OCCUPIED AND BED-OCCUPANCY RATES, 2004-2008

Table 22

	2004	2005	2006	2007	2008
<u>AVERAGE NO OF BEDS</u>					
<u>AVAILABLE</u>	5030	4920	5150	5450	4840
<u>BED-NIGHTS OCCUPIED</u>					
('000)					
January	67.9	69.8	76.8	87.4	86.9
February	66.0	58.5	73.3	87.8	81.4
March	72.9	77.2	76.7	102.4	96.4
April	68.4	61.4	75.5	97.4	90.6
May	62.7	56.5	62.9	80.4	78.0
June	57.9	52.6	64.8	75.6	64.3
July	68.8	65.9	82.7	97.9	81.4
August	80.3	89.8	102.1	110.9	100.2
September	61.8	70.1	82.2	90.1	78.6
October	75.2	79.5	93.2	107.5	92.9
November	67.0	76.9	84.8	95.7	80.3
December	59.0	63.6	75.2	82.7	76.2
YEAR	808	822	950	1116	1007
<u>BED-OCCUPANCY RATES</u>					
	(Percentages)				
January	44	47	48	51	55
February	45	44	51	57	57
March	47	52	48	60	63
April	45	43	49	59	62
May	40	39	40	48	56
June	38	37	44	48	51
July	44	44	53	58	56
August	50	56	63	65	65
September	40	45	52	55	53
October	49	49	58	63	60
November	46	50	55	59	54
December	39	41	47	48	50
YEAR	51	44	51	56	57

Source: National Statistics Bureau (Hotel returns)

HOTEL STATISTICS: ANALYSIS BY OCCUPANCY AND BY VISITORS

Table 23

Period	No. of Rooms	Room Nights	No. of Beds	Bed Nights	Room nights	Room Nights (%)	Bed Night (%)	Visitor Nights		
								Visitors	Residents	Total
2000	2470	904,630	5000	1,828,610	493,020	55	52	933,140	12,310	945,450
2001	2440	892,080	4940	1,803,060	483,880	54	51	913,410	12,190	925,600
2002	2360	860,850	4780	1,746,400	465,500	54	51	883,090	13,760	896,850
2003	2440	888,880	4930	1,798,080	432,060	49	46	824,550	8,440	832,990
2004	2480	906,510	5030	1,840,320	417,110	46	44	797,910	10,080	807,990
2005	2420	883,000	4920	1,796,290	424,550	48	46	809,330	12,290	821,620
2006	2530	923,070	5140	1,874,390	494,140	54	51	931,900	18,300	950,200
2007	2710	990,300	5460	1,993,810	578,770	58	56	1,095,480	20,460	1,115,940
2008	2360	863,980	4840	1,769,910	520,740	60	57	990,430	16,690	1,007,120
2007 Q1	2740	246,600	5530	497,750	144,800	59	56	274,060	3,520	277,580
Q2	2690	244,300	5390	490,360	131,630	54	52	246,990	6,490	253,480
Q3	2710	249,160	5460	502,400	151,490	61	60	293,360	5,690	299,050
Q4	2720	250,230	5470	503,310	150,900	60	57	281,080	4,750	285,830
2008 Q1	2430	220,930	5010	455,580	135,540	61	58	260,290	1,260	261,550
Q2	2220	201,970	4530	412,430	120,640	60	57	228,320	1,840	230,160
Q3	2380	218,940	4870	447,790	134,540	61	58	255,940	2,090	258,030
Q4	2410	222,130	4940	454,120	130,020	59	55	245,880	1,790	247,670
Percentage Change: Year on Previous Year and Quarter over Corresponding Quarter in Previous Year										
2001	-1.2	-1.4	-1.2	-1.4	-1.9	-1.8	-1.9	-2.1	-1.0	-2.1
2002	-3.3	-3.5	-3.2	-3.1	-3.8	0.0	0.0	-3.3	12.9	-3.1
2003	3.4	3.3	3.1	3.0	-7.2	-9.3	-9.8	-6.6	-38.7	-7.1
2004	1.6	2.0	2.0	2.3	-3.5	-6.1	-4.3	-3.2	19.4	-3.0
2005	-2.4	-2.6	-2.2	-2.4	1.8	4.6	3.9	1.4	21.9	1.7
2006	4.5	4.5	4.5	4.3	16.4	12.3	11.6	15.1	48.9	15.6
2007	7.1	7.3	6.2	6.4	17.1	7.4	9.8	17.6	11.8	17.4
2007 Q1	8.7	8.7	7.8	7.8	24.3	15.7	14.3	23.0	-9.7	22.4
Q2	7.6	7.5	6.5	6.5	23.6	14.9	18.2	24.8	24.3	24.7
Q3	6.7	6.8	6.0	6.0	10.2	3.4	7.1	11.9	16.4	12.0
Q4	15.3	-71.0	13.0	-71.6	-71.0	0.0	0.0	-71.6	-71.5	-71.6
2008 Q1	-11.3	-10.4	-9.4	-8.5	-6.4	3.4	3.6	-5.0	-64.2	-5.8
Q2	-17.5	-17.3	-16.0	-15.9	-8.3	11.1	9.6	-7.6	-71.6	-9.2
Q3	-12.2	-12.1	-10.8	-10.9	-11.2	0.0	-3.3	-12.8	-63.3	-13.7
Q4	-11.4	-11.2	-9.7	-9.8	-13.8	-1.7	-3.5	-12.5	-62.3	-13.4

BED-NIGHTS OCCUPIED BY TYPE OF ACCOMMODATION AND LOCATION, 2004 - 2008

Table 24

	YEAR	Jan	Feb	Mar	Apr	May	Jun	Jul	Aug	Sep	Oct	Nov	Dec	Year
<u>BED-NIGHTS OCCUPIED</u>														
(000)	2004	67.9	66.0	72.9	68.4	62.7	57.9	68.8	80.3	61.8	75.2	67.0	59.0	808
	2005	69.8	58.5	77.2	61.4	56.5	52.6	65.9	89.8	70.1	79.5	76.9	63.6	822
	2006	76.7	73.3	76.7	74.5	62.9	64.8	82.7	102.1	82.1	93.2	84.8	75.2	950
	2007	87.4	87.8	102.4	97.4	80.4	75.6	97.9	110.9	90.1	107.5	95.7	82.7	1116
	2008	86.9	81.4	96.4	90.6	78.0	64.3	81.4	100.2	78.6	92.9	80.3	76.2	1007
<u>Hotels and self catering</u>														
	2004	54.5	53.1	57.5	54.2	50.1	48.0	55.1	63.6	50.2	59.0	51.8	46.0	643
	2005	55.9	44.2	59.8	46.7	43.6	43.4	51.9	72.1	57.0	63.8	60.9	51.0	650
	2006	62.2	59.1	60.5	61.0	51.9	55.5	68.0	82.6	68.6	77.5	69.3	61.8	778
	2007	72.7	71.9	83.4	80.5	67.0	64.9	81.2	90.7	74.3	90.0	78.1	68.2	923
	2008	72.6	66.1	79.6	74.9	63.3	53.0	65.6	82.5	64.1	75.2	64.8	58.6	820
Mahe	2004	33.1	29.1	30.1	28.8	26.6	22.9	27.6	30.1	25.2	30.8	27.1	25.4	337
	2005	34.1	23.5	33.4	25.2	25.2	20.8	26.1	37.2	29.6	34.3	36.5	30.9	354
	2006	36.5	33.1	32.5	34.7	27.3	29.8	36.8	44.7	38.0	44.6	40.5	38.1	437
	2007	43.3	38.8	45.5	43.5	33.4	32.4	39.9	44.5	38.0	49.2	42.3	40.5	491
	2008	39.5	34.7	39.5	35.9	31.2	27.1	32.1	37.3	30.3	36.7	30.7	29.0	404
Other Islands	2004	21.4	24.0	27.3	25.4	23.5	25.1	27.5	33.5	25.0	28.3	24.7	20.6	306
	2005	21.8	20.7	26.4	21.5	21.5	22.6	25.8	35.0	27.4	29.5	24.4	20.1	296
	2006	25.8	26.0	27.9	26.3	24.6	25.7	31.2	47.5	30.7	32.9	28.7	23.7	341
	2007	29.5	33.1	37.9	36.9	36.9	32.5	41.4	46.2	36.3	40.5	35.9	27.7	430
	2008	33.0	31.4	40.1	39.0	32.1	25.9	33.5	45.2	33.8	38.5	34.2	29.5	416
<u>Guest and Private houses</u>														
	2004	13.0	12.9	15.4	14.2	12.6	9.9	13.8	16.7	11.6	16.2	15.2	13.0	165
	2005	13.9	14.3	17.3	14.7	14.7	9.3	14.0	17.7	13.1	15.8	16.0	12.6	171
	2006	14.5	14.2	16.2	14.4	10.4	9.3	14.7	19.5	13.5	15.7	15.6	13.4	171
	2007	14.7	15.8	19.0	17.0	13.5	10.7	16.7	20.2	15.9	16.2	17.5	14.4	193
	2008	14.3	15.3	16.8	15.7	14.7	11.3	15.8	17.7	14.5	17.6	15.5	17.6	187
Mahe	2004	4.8	4.7	5.5	4.6	4.2	2.9	4.7	5.4	4.2	5.3	5.5	4.9	57
	2005	5.2	5.5	6.9	5.4	5.4	2.6	4.8	6.3	4.6	5.3	5.3	5.1	61
	2006	5.9	5.6	6.0	4.8	3.4	2.1	4.7	6.2	4.7	4.9	4.9	5.4	59
	2007	5.4	6.2	6.3	5.4	4.3	2.6	4.8	5.8	5.1	5.9	6.1	5.3	63
	2008	5.3	5.0	4.9	4.7	4.7	3.5	6.5	5.8	5.0	6.1	6.1	7.6	65
Other Islands	2004	8.0	8.1	10.0	9.8	3.0	7.0	9.0	11.4	7.5	10.9	9.7	8.2	108
	2005	8.7	8.8	10.5	9.3	8.4	6.7	9.2	11.4	8.5	10.5	10.7	7.5	110
	2006	8.6	8.6	10.2	9.6	7.0	7.2	10.0	13.3	8.8	10.8	10.6	8.0	113
	2007	9.2	9.7	12.7	11.5	9.1	8.1	11.9	14.4	10.8	11.9	11.5	9.2	130
	2008	9.0	10.3	11.9	11.0	10.1	7.8	9.3	11.9	9.5	11.5	9.3	10.0	122

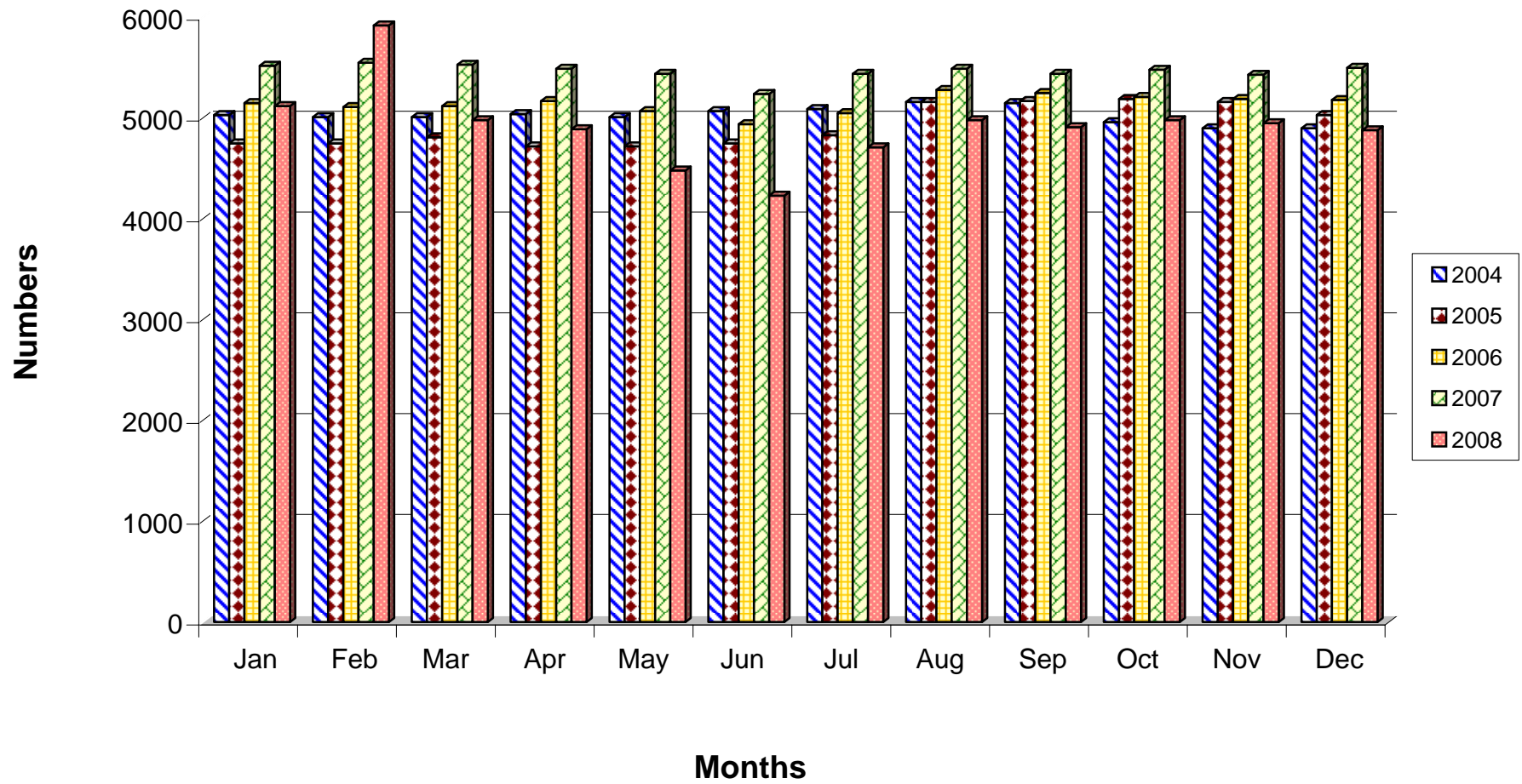
BEDS AVAILABLE BY TYPE OF ACCOMMODATION AND LOCATION, 2004 - 2008

Table 25

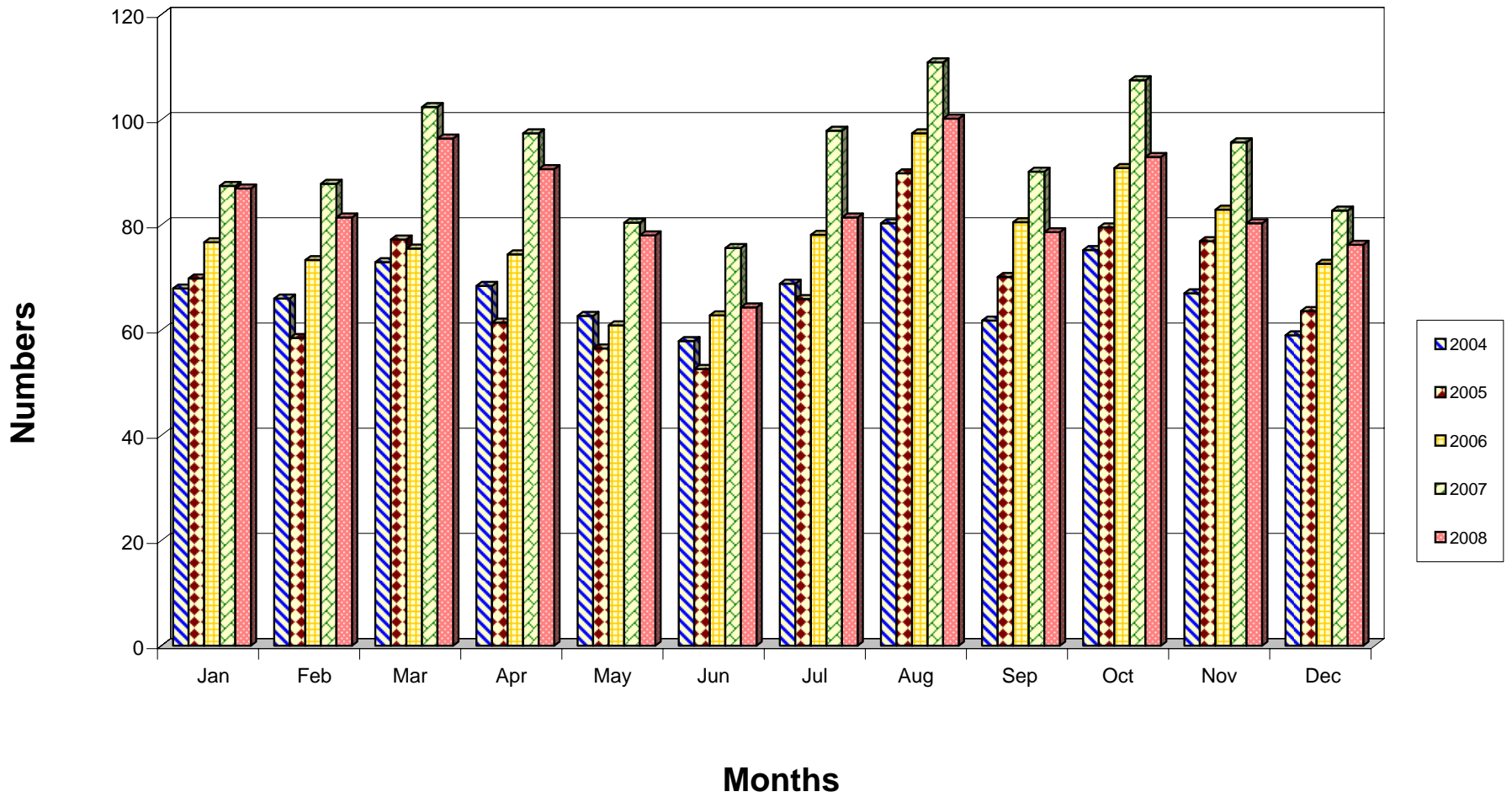
	YEAR	Jan	Feb	Mar	Apr	May	Jun	Jul	Aug	Sep	Oct	Nov	Dec	Year
AVE. NO OF BEDS AVAILABLE	2004	5030	5010	5010	5040	5010	5070	5090	5160	5150	4960	4900	4900	5030
	2005	4750	4750	4810	4720	4720	4750	4830	5160	5170	5190	5160	5030	4920
	2006	5150	5110	5120	5170	5070	4940	5050	5280	5250	5210	5190	5180	5140
	2007	5520	5550	5530	5490	5440	5240	5440	5490	5440	5480	5430	5500	5460
	2008	5120	4920	4980	4890	4480	4230	4710	4980	4910	4980	4950	4880	4840
Hotels and self catering	2004	3770	3770	3780	3810	3780	3920	3850	3920	3920	3700	3690	3700	3800
	2005	3500	3490	3560	3510	3490	3640	3680	3940	3940	3990	3850	3850	3720
	2006	3950	3910	3930	3980	3890	3800	3850	4020	4050	4010	4000	4000	3950
	2007	4330	4370	4370	4350	4310	4240	4290	4360	4300	4330	4310	4410	4330
	2008	3970	3790	3840	3770	3360	3160	3580	3840	3750	3790	3820	3790	3710
Mahe	2004	2090	2090	2070	2060	2060	2190	2180	2190	2190	1970	1970	1980	2090
	2005	1980	1980	1980	1980	1970	1970	1970	1990	2240	2240	2240	2250	2090
	2006	2260	2220	2240	2260	2240	2210	2230	2320	2390	2370	2380	2380	2290
	2007	2400	2430	2400	2420	2410	2360	2390	2440	2410	2450	2430	2450	2410
	2008	2050	1810	1830	1820	1590	1530	1820	1840	1830	1840	1830	1840	1800
Other Islands	2004	1680	1680	1710	1750	1730	1720	1670	1730	1730	1730	1720	1720	1710
	2005	1530	1510	1580	1540	1530	1670	1690	1700	1710	1750	1700	1610	1630
	2006	1690	1690	1690	1720	1660	1590	1620	1700	1670	1640	1620	1620	1660
	2007	1930	1940	1970	1930	1900	1880	1900	1920	1890	1880	1880	1960	1920
	2008	1920	1980	2010	1940	1770	1640	1760	2000	1920	1950	1990	1950	1900
Guest and Private houses	2004	1260	1240	1230	1240	1230	1180	1230	1240	1230	1260	1210	1200	1230
	2005	1250	1220	1250	1210	1220	1110	1150	1210	1230	1200	1220	1180	1210
	2006	1200	1190	1170	1190	1170	1140	1200	1270	1200	1200	1190	1180	1190
	2007	1200	1170	1170	1140	1130	1010	1150	1130	1150	1150	1120	1090	1130
	2008	1150	1120	1140	1120	1120	1060	1130	1150	1170	1190	1130	1080	1130
Mahe	2004	520	510	510	500	500	440	510	510	520	520	530	520	510
	2005	520	530	530	510	510	420	480	510	520	510	500	500	500
	2006	510	510	500	510	510	440	480	510	500	500	500	490	500
	2007	500	500	450	430	340	330	430	410	430	430	430	440	440
	2008	450	440	430	440	430	390	480	460	460	460	460	460	450
Other Islands	2004	740	730	730	740	730	710	730	730	710	740	680	670	720
	2005	730	690	720	700	710	690	670	710	710	700	710	680	700
	2006	700	690	690	680	670	710	730	760	700	700	690	680	700
	2007	700	680	710	690	710	670	720	730	720	720	700	650	700
	2008	700	690	700	690	690	670	650	690	710	730	670	620	680

Source: National Statistics Bureau (Hotel Returns)

AVERAGE NUMBER OF BEDS AVAILABLE, 2004 - 2008



BEDNIGHTS OCCUPIED, 2004 - 2008



STATISTICAL PUBLICATIONS

The following publications are available from National Statistics Bureau

Title	Year	Prices
Census Report	1977	SR 80.00
Census Report	1987**	SR 75.00
Census Report 1994 Volume 1	1994	SR 90.00
National Population & Housing Census	1997	SR 125.00
National Population & Housing Census	2002*	SR 200.00
Seychelles Population & Housing Census - Atlas	2002*	SR 150.00
The Population of Seychelles 1987 - 2012	1992**	SR 35.00
Seychelles Population Projections 1996-2019	1997	SR 50.00
Household Expenditure Survey	1978	SR 60.00
	1983/84	SR 45.00
	1991	SR 60.00
	1999*	SR 115.00
Labour Force Survey	2005	SR 200.00
Agriculture Survey	1978	SR 60.00
Statistical Abstract	1977	SR 60.00
	1978 - 1982	SR 50.00 each
	1983 - 1986	SR 60.00 each
	1987 - 1993	SR 70.00 each
	1994	SR 75.00
	1995	SR 85.00
	1996 - 1998	SR 100.00 each
	1999 - 2001	SR 115.00 each
	2002	SR 130.00
	2003 - 2005	SR 140.00 each
	2006	SR 150.00
Trade Report	1978 - 1980	SR 60.00 each
	1981	SR 30.00
	1982 - 1983	SR 60.00 each
	1984 - 1986	SR 70.00 each
	1987 - 1994	SR 80.00 each
	1995	SR 115.00
	1996	SR 150.00
	1997	SR 140.00
	1998	SR 175.00
	1999 - 2002	SR 230.00
	2003-2005*	SR 230.00
	1980 - 1983	SR 20.00
Fishing Survey Report		
Sources and Methods of Estimating National Accounts for Seychelles at Current and Constant Prices	1980	SR 110.00
National Income and Expenditure	1989	SR 30.00
	1990 - 1991	SR 35.00 each
	1992 - 1993	SR 40.00 each
	1996 - 1999*	SR 50.00 each
Migration and Tourism Statistics	1978	SR 15.00
	1979 - 1980	SR 25.00 each
	1983 - 1987	SR 15.00 each
	1988 - 1994	SR 30.00 each
	1995 - 1996	SR 35.00 each
	1997 - 2002	SR 40.00 each
	2003	SR 45.00
	2004 - 2007	SR 25.00 each
Literacy Survey	1989	Out of print **
Seychelles in Figures (Edition)	1983 - 1987	SR 2.50 each
	1988 - 1989	SR 3.50 each
	1990 - 2000	SR 5.00 each
	2001 - 2007	SR 15.00 each
Statistical Bulletin Quarterly:	1980 - 1981	SR 25.00 each
New series introduced since July 1982		
(Yearly Airmail Subscription)		SR 500.00
- Tourism	Monthly	SR 5.00
- External Trade	Quarterly	SR 5.00
- Retail Price Index	Monthly	SR 5.00
- Production Indicators	Quarterly	SR 5.00
- Employment and Earnings	Half Yearly	SR 5.00
- Population and Vital Statistics	Half Yearly	SR 5.00
- Visitors Survey	Annually	SR 5.00
- National Accounts	Annually (Pre 1989)	SR 5.00

Prices are as indicated plus airmail or surface mail postage and packaging.

Inclusive prices can be provided for specific publication on request.

Subscription for the Statistical Bulletins are available for the current year only.

Subscription for specific bulletin is available.

*Publications just released. **Information available on request.

The following publications are out of print.

Statistical Abstract 1980, 1981, 1983, 1987, 1989, 1990, 1992, 1993, 1994, 1995

Migration & Tourism Statistics 1981, 1982.

Census Report 1987, Population of Seychelles 1987-2012, Agriculture Survey 1987

National Income & Expenditure 1989, 1992

Literacy Survey 1989, Health in Seychelles