



STATISTICAL BULLETIN

CPI: No 6 of 2009

June 2009

CONSUMER PRICE INDEX – MAY 2009

CONTENTS

MAY 2009 SUMMARY

TABLES

- Table 1(a)** Consumer Price Index Summary: 2007 – 2009
- Table 1(b)** Consumer Price Index 12 Monthly Average Index
- Table 2** Consumer Price Index for Sub-Group of Items
- Table 3** Consumer Price Index Group Indices – Month on month percentage change
- Table 4** Consumer Price Index Group Indices – Year on year percentage change

CHARTS

- Chart 1** Percentage change in Fish, Other Food, Non -Food and All Items prices over same month in previous year
- Chart 2** Month on month percentage change in prices of Fish, Other Food, Non-Food and All Items
- Chart 3** Year on year percentage change in annual average index: 2003 – 2008

NATIONAL STATISTICS BUREAU

CARAVELLE HOUSE - MANGLIER STREET, P.O. BOX 206 - VICTORIA - MAHE - SEYCHELLES, Tel: +248 611650 - Fax: +248 225634/225339
E-mail: ceo@nsb.gov.sc, stats@nsb.gov.sc - Website: www.nsb.gov.sc

"Your stepping-stone for informed decisions"

CONSUMER PRICE INDEX

MAY 2009 SUMMARY

1. This is the May 2009 issue of the CPI with July 2007 as the base. In this bulletin, indices are presented in several tables. Table 1(a) presents the monthly CPI for the broad categories (Fish, Other Food, Non-Food and All Items) for January 2007 up to May 2009 and Table 1(b) shows the average index over two twelve monthly periods. Table 2 gives detailed indices by month for 2009. Table 3 shows the month on month percentage change whilst Table 4 shows the year on year percentage change.
2. In May 2009, the All Items Index stood at 186.7 compared to 127.3 in May 2008. On a year on year comparison, this reflects a 46.7% increase in overall prices.
3. The All Items rate of inflation as at May 2009 stood at 45.4 % as shown in Table 1(b). This is measured as a ratio of the average index over the 12-month period (Jun 2008 - May 2009) to the average index of the preceding twelve-month period (Jun 2007 - May 2008). Over the same period, the rate of inflation for Fish stood at (8.6%), Other Food (56.6%) and Non-Food (42.8%).

MONTH ON MONTH COMPARISON (Table 3 & Chart 2)

4. On a month on month comparison, Fish prices increased by 13.1% in May 2009 compared to April 2009. Over the same period, Other Food prices decreased by 1.8%, Non-Food Items by 1.4% and All Items also decreased by 1.3%. (Table 3).
5. In the Other Food category, decreases were recorded in the price of most of the sub-categories. The most remarkable decrease was in oils and fats (-7.4%), bread and cereals (-4.7%) and milk, cheese and eggs (-3.2%). These are due to a decrease in price of some basic goods by the Seychelles Trading Company.
6. In the Non-Food category, there were also slight changes in prices in most of the categories. For these categories, the most significant increases were in education due to a price increase in tuition fees of private schools (11.4%) and housing, water, electricity and gas (8.7%), due to a downward revision in electricity tariffs by PUC.

YEAR ON YEAR COMPARISON (Table 4 & Chart 1)

7. On a year on year comparison, there were very significant increases in prices in May 2009 compared to May 2008. The Fish index stood at (118.5) reflecting a (32.2%) increase, the Other Food Index at (212.5) reflects a (62.3%) increase and the Non-Food index of (180.7) reflects a (41.4%) increase in prices.
8. In the Other Food category, the sub-category meat (fresh, chilled, frozen) recorded the highest increase in prices (82.2%). This was followed by non-alcoholic beverages (80.9%), sugar, jam, honey and confectionery (77.2%) and oils and fats (68.1%).
9. In the Non-Food category, the sub-category tobacco recorded the highest increase in prices (103.6%). The next highest increase was in the alcoholic beverages (61.4%), followed by recreation and culture (52.3%) and transport (52.1%).

The CPI and Rate of Inflation

1. The CPI is an index or tool which measures price changes in goods and services with reference to a base period for which the index is set to equal 100. Any increase or decrease in this index reflects an increase or decrease in the price of the good or service compared to the price in the base period. Rapid increases in the index imply that the market structure is changing. The movement in index from one period to another can be expressed as a percentage change or changes in index points.
2. The Rate of Inflation on the other hand measures the rate at which the cost of a fixed basket of goods and services is changing over time. This is usually measured as a ratio of the average index over a twelve month period to the average index of the preceding twelve month period as shown in Table 1(b).

NOTE:

- The Fish Index published for the current month is based on fish prices collected at the Victoria market, other Mahe, Praslin and La Digue.

CONSUMER PRICE INDEX SUMMARY: 2007 - 2009

Table 1(a)

		FISH	OTHER FOOD	NON-FOOD	ALL ITEMS
	Weights (1)	3.3	25.5	71.1	100.0
Monthly Index					
Jan	2007	84.7	97.4	98.6	97.8
Feb	2007	82.1	97.7	98.6	97.8
Mar	2007	83.3	98.1	99.5	98.6
Apr	2007	84.7	98.3	99.5	98.7
May	2007	88.2	98.3	99.5	98.8
Jun	2007	97.4	99.4	100.0	99.7
Jul	2007	100.0	100.0	100.0	100.0
Aug	2007	109.0	102.4	102.9	103.0
Sep	2007	109.9	104.0	106.3	105.8
Oct	2007	99.4	112.8	108.7	109.4
Nov	2007	95.8	118.5	110.2	111.8
Dec	2007	97.9	121.6	111.8	113.8
Jan	2008	103.0	125.2	124.7	124.1
Feb	2008	106.0	130.8	126.5	126.9
Mar	2008	98.8	130.2	127.4	127.1
Apr	2008	92.8	132.1	128.1	127.9
May	2008	89.6	130.9	127.8	127.3
Jun	2008	102.0	133.7	131.7	131.2
Jul	2008	104.9	138.8	133.2	133.7
Aug	2008	109.0	144.6	142.2	141.7
Sep	2008	109.6	145.5	142.2	142.0
Oct	2008	114.7	146.9	145.2	144.6
Nov	2008	108.5	199.4	175.7	179.5
Dec	2008	109.1	212.0	180.1	185.9
Jan	2009	109.8	214.9	181.6	187.7
Feb	2009	109.3	220.5	183.1	190.2
Mar	2009	103.1	219.8	183.4	190.0
Apr	2009	104.8	216.4	183.4	189.2
May	2009	118.5	212.5	180.7	186.7
% change over same month of previous year					
Jan	2008	21.7%	28.6%	26.6%	26.9%
Feb	2008	29.1%	33.9%	28.3%	29.8%
Mar	2008	18.6%	32.7%	28.0%	28.9%
Apr	2008	9.6%	34.3%	28.7%	29.6%
May	2008	1.7%	33.2%	28.5%	28.9%
Jun	2008	4.7%	34.6%	31.7%	31.6%
Jul	2008	4.9%	38.8%	33.2%	33.7%
Aug	2008	0.0%	41.2%	38.1%	37.5%
Sep	2008	-0.3%	39.9%	33.9%	34.2%
Oct	2008	15.4%	30.2%	33.6%	32.2%
Nov	2008	13.3%	68.3%	59.5%	60.6%
Dec	2008	11.4%	74.3%	61.1%	63.3%
Jan	2009	6.5%	71.6%	45.6%	51.2%
Feb	2009	3.2%	68.6%	44.7%	49.8%
Mar	2009	4.4%	68.8%	44.0%	49.5%
Apr	2009	12.9%	63.8%	43.2%	47.9%
May	2009	32.2%	62.3%	41.4%	46.7%

Source: National Statistics Bureau

(1) Weights are based on the results of Household Budget Survey of May 2006-July 2007

(2) July 2007 = 100

CONSUMER PRICE INDEX - 12 MONTHLY AVERAGE INDEX

Table 1(b)

	FISH	OTHER FOOD	NON-FOOD	ALL ITEMS
Weights	3.3	25.5	71.1	100.0
Reference period				
Jun 2007 - May 2008	100.0	117.3	114.5	114.8
Jun 2008 - May 2009	108.6	183.8	163.5	166.9
% change	8.6%	56.6%	42.8%	45.4%

CONSUMER PRICE INDEX FOR SUB-GROUP OF ITEMS, 2009

Table 2

		Jan	Feb	Mar	Apr	May	Jun	Jul	Aug	Sep	Oct	Nov	Dec
	WEIGHTS (1)	2009	2009	2009	2009	2009	2009	2009	2009	2009	2009	2009	2009
FISH	3.3	109.8	109.3	103.1	104.8	118.5							
OTHER FOOD	25.5	214.9	220.5	219.8	216.4	212.5							
Bread and Cereals	4.2	229.2	252.4	248.2	247.4	235.8							
Meat (Fresh, chilled, frozen)	4.3	221.8	224.2	226.4	226.4	223.9							
Fish (Frozen, smoked, salted)	0.4	189.8	191.3	191.3	190.8	190.8							
Milk, cheese and eggs	2.6	224.9	224.7	223.4	222.6	215.5							
Oils and fats	1.0	282.6	277.5	276.1	276.0	257.7							
Fruits	1.4	190.2	190.4	189.9	190.2	190.3							
Vegetables	3.6	182.6	187.0	183.3	182.8	182.9							
Sugar, jam, honey and confectionery	1.3	188.3	196.1	197.0	196.9	196.3							
Food products n.e.c	2.1	190.7	194.7	195.2	195.3	193.9							
Non-alcoholic beverages	4.6	228.4	229.6	230.7	213.5	213.3							
NON-FOOD ITEMS	71.1	181.6	183.1	183.4	183.4	180.7							
Alcoholic beverages	14.1	205.7	205.8	206.1	200.3	200.4							
Tobacco	1.9	298.7	300.5	301.4	304.4	305.1							
Clothing and footwear	1.9	163.2	162.5	164.0	164.0	164.9							
Housing, water, electricity, & gas	14.1	193.9	194.5	194.5	194.2	177.4							
Furniture & household equipment	5.5	144.7	148.5	151.2	153.4	153.9							
Health	0.6	138.2	139.7	140.6	140.6	140.9							
Transport	9.4	212.7	213.1	213.4	221.0	221.0							
Communication	8.6	137.4	137.5	137.5	137.5	137.5							
Recreation and culture	4.8	181.3	186.7	186.7	186.7	186.7							
Education	2.3	100.0	112.3	112.3	112.3	125.1							
Restaurants and hotels	1.6	147.9	150.7	150.7	150.7	150.7							
Miscellaneous goods and services	6.3	159.3	161.2	160.0	159.1	160.9							
ALL ITEMS	100.0	187.7	190.2	190.0	189.2	186.7							

Source: National Statistics Bureau

(1) Weights are based on the results of Household Budget Survey of May 2006-July 2007

(2) July 2007 = 100

CONSUMER PRICE INDEX - GROUP INDICES - MONTH ON MONTH % CHANGE

Table 3

		Jan	Feb	Mar	Apr	May	Jun	Jul	Aug	Sep	Oct	Nov	Dec
	WEIGHTS (1)	2009	2009	2009	2009	2009	2009	2009	2009	2009	2009	2009	2009
FISH	3.3	0.6%	-0.4%	-5.7%	1.7%	13.1%							
OTHER FOOD	25.5	1.4%	2.6%	-0.3%	-1.5%	-1.8%							
Bread and Cereals	4.2	0.8%	10.1%	-1.6%	-0.3%	-4.7%							
Meat (Fresh, chilled, frozen)	4.3	1.6%	1.1%	1.0%	0.0%	-1.1%							
Fish (Frozen, smoked, salted)	0.4	6.8%	0.7%	0.0%	-0.2%	0.0%							
Milk, cheese and eggs	2.6	1.6%	-0.1%	-0.6%	-0.3%	-3.2%							
Oils and fats	1.0	0.1%	-1.8%	-0.5%	0.0%	-6.6%							
Fruits	1.4	-3.9%	0.1%	-0.2%	0.1%	0.0%							
Vegetables	3.6	4.0%	2.4%	-2.0%	-0.2%	0.0%							
Sugar, jam, honey and confectionery	1.3	3.2%	4.2%	0.4%	-0.1%	-0.3%							
Food products n.e.c	2.1	3.3%	2.1%	0.3%	0.1%	-0.7%							
Non-alcoholic beverages	4.6	0.4%	0.5%	0.5%	-7.4%	-0.1%							
NON-FOOD ITEMS	71.1	0.8%	0.9%	0.2%	0.0%	-1.4%							
Alcoholic beverages	14.1	0.3%	0.0%	0.1%	-2.8%	0.1%							
Tobacco	1.9	0.8%	0.6%	0.3%	1.0%	0.2%							
Clothing and footwear	1.9	0.7%	-0.5%	0.9%	0.0%	0.5%							
Housing, water, electricity, & gas	14.1	-0.1%	0.3%	0.0%	-0.1%	-8.7%							
Furniture & household equipment	5.5	2.1%	2.6%	1.8%	1.5%	0.3%							
Health	0.6	0.0%	1.1%	0.7%	0.0%	0.3%							
Transport	9.4	2.2%	0.2%	0.1%	3.6%	0.0%							
Communication	8.6	0.0%	0.1%	0.0%	0.0%	0.0%							
Recreation and culture	4.8	0.6%	3.0%	0.0%	0.0%	0.0%							
Education	2.3	0.0%	12.3%	0.0%	0.0%	11.4%							
Restaurants and hotels	1.6	0.8%	1.9%	0.0%	0.0%	0.0%							
Miscellaneous goods and services	6.3	2.8%	1.2%	-0.7%	-0.6%	1.1%							
ALL ITEMS	100.0	1.0%	1.3%	-0.1%	-0.4%	-1.3%							

Source: National Statistics Bureau

(1) Weights are based on the results of Household Budget Survey of May 2006-July 2007

(2) July 2007 = 100

CONSUMER PRICE INDEX - GROUP INDICES - YEAR ON YEAR % CHANGE

Table 4

		Jan	Feb	Mar	Apr	May	Jun	Jul	Aug	Sep	Oct	Nov	Dec
	WEIGHTS (1)	2009	2009	2009	2009	2009	2009	2009	2009	2009	2009	2009	2009
FISH	3.3	6.5%	3.2%	4.4%	12.9%	32.2%							
OTHER FOOD	25.5	71.6%	68.6%	68.8%	63.8%	62.3%							
Bread and Cereals	4.2	70.1%	81.5%	79.7%	75.8%	61.6%							
Meat (Fresh, chilled, frozen)	4.3	87.1%	84.4%	84.8%	84.5%	82.2%							
Fish (Frozen, smoked, salted)	0.4	53.0%	53.9%	54.9%	54.9%	54.7%							
Milk, cheese and eggs	2.6	67.7%	71.3%	62.1%	64.5%	60.8%							
Oils and fats	1.0	100.1%	91.3%	94.1%	81.5%	68.1%							
Fruits	1.4	48.9%	45.0%	47.8%	37.1%	41.8%							
Vegetables	3.6	43.3%	25.8%	25.5%	22.5%	29.9%							
Sugar, jam, honey and confectionery	1.3	70.7%	79.0%	71.4%	71.6%	77.2%							
Food products n.e.c	2.1	66.0%	58.4%	59.8%	56.4%	54.2%							
Non-alcoholic beverages	4.6	89.1%	84.7%	92.8%	77.5%	80.9%							
NON-FOOD ITEMS	71.1	45.6%	44.7%	44.0%	43.2%	41.4%							
Alcoholic beverages	14.1	75.4%	66.1%	66.1%	60.7%	61.4%							
Tobacco	1.9	92.8%	91.4%	96.5%	98.1%	103.6%							
Clothing and footwear	1.9	37.2%	32.5%	33.5%	30.5%	30.6%							
Housing, water, electricity, & gas	14.1	28.1%	28.5%	26.9%	26.7%	18.0%							
Furniture & household equipment	5.5	30.7%	33.3%	32.8%	35.0%	35.6%							
Health	0.6	20.3%	17.2%	19.8%	18.7%	18.0%							
Transport	9.4	54.9%	55.0%	53.0%	53.9%	52.1%							
Communication	8.6	37.2%	37.4%	37.2%	39.5%	37.3%							
Recreation and culture	4.8	49.9%	54.8%	52.8%	51.5%	52.3%							
Education	2.3	0.0%	12.3%	12.3%	12.3%	25.1%							
Restaurants and hotels	1.6	21.4%	23.7%	23.7%	23.7%	23.7%							
Miscellaneous goods and services	6.3	38.0%	36.5%	36.5%	34.5%	34.2%							
ALL ITEMS	100.0	51.2%	49.8%	49.5%	47.9%	46.7%							

Source: National Statistics Bureau

(1) Weights are based on the results of Household Budget Survey of May 2006-July 2007

(2) July 2007 = 100

Chart 1
Percentage change in Fish, Other Food, Non-Food and All Items Prices
over same month in previous year

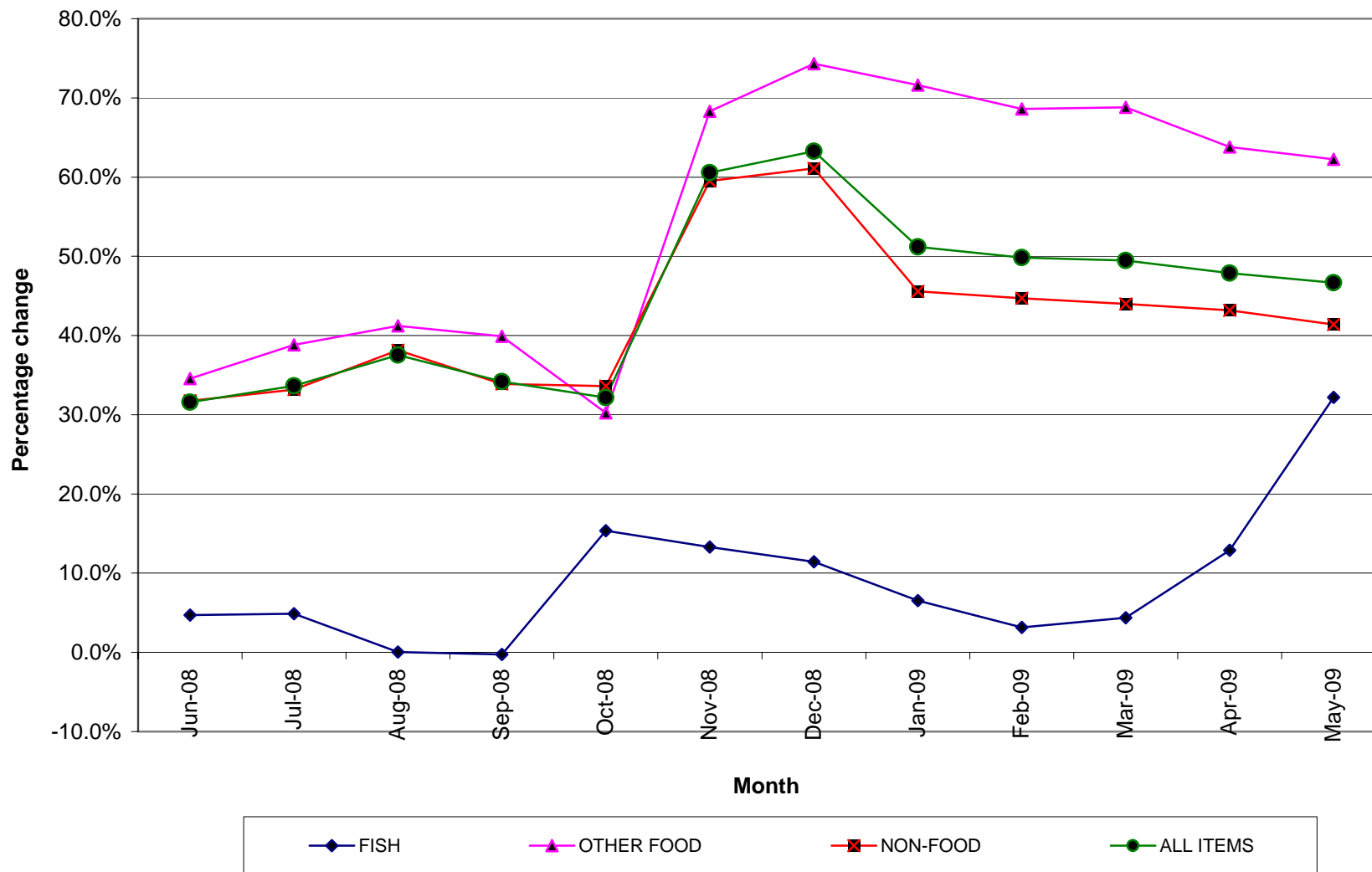


Chart 2
Month on month Percentage change in prices of Fish, Other Food, Non-Food and All Items

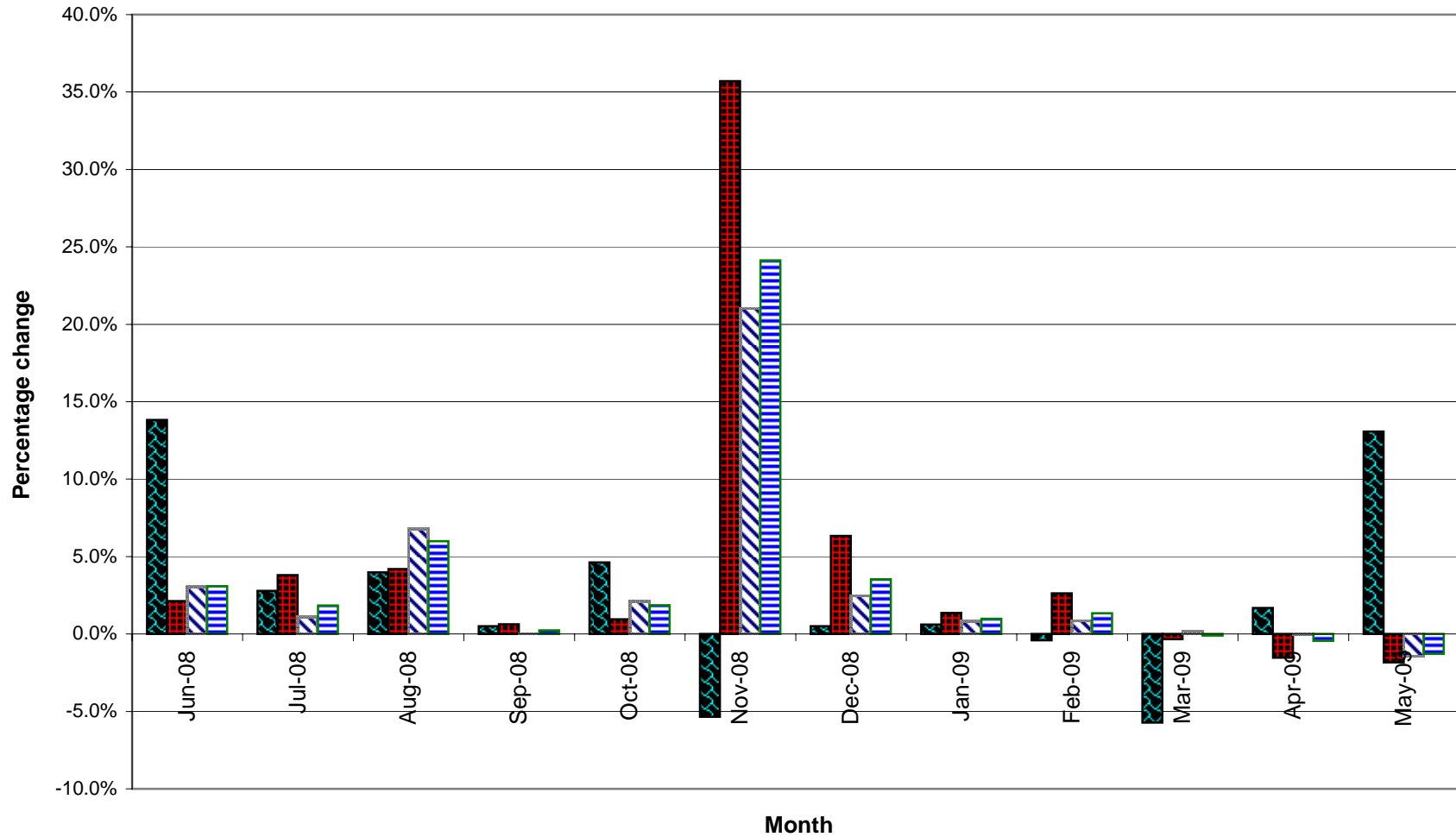


Chart 3
Year on year percentage change in annual average index
2003 - 2008

