



# STATISTICAL BULLETIN

Tourism 2009

No. 11

DECEMBER 2009

## VISITOR STATISTICS NOVEMBER 2009

### SUMMARY

#### VISITOR ARRIVALS STATISTICS, NOVEMBER 2009

1. Visitor arrivals and average length of stay, 2003-2009
2. Visitor arrivals by purpose of visit, 2006-2009
3. Visitor arrivals by country of residence and month, 2009
4. Visitor departures: distribution of length of stay, 2000-2009
5. Visitor arrivals by mode of transport, 2008-2009
- 6(a) Visitors stay by location, 2008-2009
- 6(b) Visitors stay by accommodation, 2008-2009
7. Chart-Visitor arrivals for the first eleven months of the last five years
8. Chart-Leading market to date for 2009 as compared to 2008
9. Chart- Percentage of visitors stay by location for the first eleven months, 2009

---

NATIONAL STATISTICS BUREAU

CARAVELLE HOUSE - MANGLIER STREET, P.O. BOX 206 - VICTORIA - MAHE - SEYCHELLES, Tel: +248 611650 - Fax: +248 225634/225339  
E-mail: ceo@nsb.gov.sc, stats@nsb.gov.sc - Website: www.nsb.gov.sc

"Your stepping-stone for informed decisions"

## **SUMMARY**

### **Visitor statistics (Tables 1 - 6)**

#### **November 2009**

1. Fourteen thousand two hundred and seventy nine (14279) visitors arrived in Seychelles during the month of November 2009, reflecting an increase of 11% compared to November 2008. This also included visitors on transit. The figure was 20% above the average for the same month of the last five years. In November 2009, visitors stayed for an average of 10.0 nights which was the same as in November 2008 (Table 1).
2. Eighty-four percent (84%) of visitors arriving in November 2009 were on holiday, whilst 8% were on business or combining business with a holiday (Table 2). Seventy-five percent (75%) of visitors were from Europe, 12% from Africa, 10% from Asia, while 3% came from America (Table 3).

#### **January to November**

#### **Number of visitors and average length of stay (Tables 1 - 6)**

3. One hundred and forty three thousand two hundred and ninety (143290) visitors arrived during the first eleven months of 2009, which was 2% below the 2008 level. The average length of stay of these visitors was 10.2 nights which was the same as in 2008 and indicating a 1% decrease in the number of visitor nights spent in Seychelles.

#### **Purpose of visit (Table 2)**

4. Ninety percent (90%) of visitors during the eleven months of 2009 were on holiday, whilst 6% were on business or combining business with a holiday and 1% was in transit.

#### **Country of Residence (Table 3)**

5. Compared to the same period in 2008, the number of visitors from Europe decreased by 2%. Increases were recorded in visitor arrivals from Italy (11%), Switzerland and Spain & Portugal both (5%) and Russia (16%). Meanwhile decreases below the 2008 level were recorded from UK & Eire (18%), Germany (7%), Austria (8%), Belgium & Luxembourg (2%), the Netherlands (6%) and Scandinavia (28%). Visitors coming from France remained unchanged.
6. During the first eleven months of 2009, the number of visitors from Africa decreased by 7% compared to the same period in 2008. Visitors from Oceania decreased by (3%) and visitors from Asia and America increased by 7% and 2%.

7. The six leading markets for 2009 are:

France	(28833)
Italy	(24481)
Germany	(18615)
UK & Eire	(10486)
Russia	(7064)
South Africa	(6740)

**Mode of Transport (Table 5)**

8. During November 2009, the majority of the non-transit visitors arrived by air transport. Comparing November 2009 with the same period in 2008, non-transit visitor arrivals increased by 12% and transit visitor arrivals decreased by 34%.

**Visitors Stay 2009 (Table 6)**

9. Tables 6(a) and 6(b) give a breakdown of visitors stay by location and accommodation respectively. Fifty-three percent (53%) of visitors reportedly stayed on Mahe, while 24% and 5% stayed on Praslin and La Digue respectively. Eighty-two (82%) of visitors reportedly stayed in hotels while 7% stayed with friends in November 2009.

**VISITOR ARRIVALS AND AVERAGE LENGTH OF STAY, 2003 - 2009**

**Table1**

	<b>Jan</b>	<b>Feb</b>	<b>Mar</b>	<b>Apr</b>	<b>May</b>	<b>Jun</b>	<b>Jul</b>	<b>Aug</b>	<b>Sep</b>	<b>Oct</b>	<b>Nov</b>	<b>Dec</b>	<b>Year</b>
	<b>(Numbers)</b>												
2003	8683	11843	12282	12518	9671	8191	9832	9970	8771	10116	9458	10703	122038
2004	9787	10954	10698	10515	9188	7483	9975	10919	8123	11344	9839	11940	120765
2005	10144	10213	12667	10615	7658	7895	10502	12444	9381	12446	12240	12449	128654
2006	11920	12528	11237	12702	8321	8964	11588	13666	11089	13867	11134	13611	140627
2007	11170	14543	15557	14709	9967	10332	13704	14149	12491	16729	13290	14632	161273
2008	12799	14863	16481	15063	11200	9546	13128	14139	11410	14189	12815	13319	158952
2009	11256	12552	14056	14444	11746	10725	12689	14192	12236	15115	14279		143290
	<b>(Percentage change)</b>												
04/03	13	-8	-13	-16	-5	-9	1	10	-7	12	4	12	-1
05/04	4	-7	18	1	-17	6	5	14	15	10	24	4	7
06/05	18	23	-11	20	9	14	10	10	18	11	-9	9	9
07/06	-6	16	38	16	20	15	18	4	13	21	19	8	15
08/07	15	2	6	2	12	-8	-4	0	-9	-15	-4	-9	-1
09/08	-12	-16	-15	-4	5	12	-3	0	7	7	11		
<b>AVERAGE LENGTH</b>	<b>(Nights)</b>												
<b><u>OF STAY (1)</u></b>													
2003	10.9	8.9	9.3	9.3	10.1	10.3	10.6	11.4	10.8	10.2	9.9	10.1	10.1
2004	10.1	9.4	10.2	9.6	10.0	10.0	10.4	11.0	10.7	10.0	9.8	9.3	10.0
2005	9.3	9.5	9.2	9.9	9.8	9.5	10.2	10.6	10.5	9.8	8.8	9.2	9.7
2006	9.6	9.1	9.6	9.6	9.7	9.8	10.4	10.8	10.4	9.3	9.9	9.6	9.8
2007	10.2	8.9	9.7	9.9	10.0	10.1	10.4	11.1	10.5	9.0	9.7	9.6	9.9
2008	9.5	9.2	10.3	10.0	10.2	10.3	10.6	11.3	10.7	9.9	10.0	9.8	10.1
2009	10.5	9.5	10.1	10.0	9.9	9.8	10.5	11.6	10.4	9.8	10.0		10.1

**Source:** National Statistics Bureau from disembarkation cards

**Note:** (1) Length of stay is calculated from immigration records from departing visitors.

**VISITOR ARRIVALS BY PURPOSE OF VISIT, 2006 - 2009**

**Table 2**

**Number of visitors**

	<b>Jan</b>	<b>Feb</b>	<b>Mar</b>	<b>Apr</b>	<b>May</b>	<b>Jun</b>	<b>Jul</b>	<b>Aug</b>	<b>Sep</b>	<b>Oct</b>	<b>Nov</b>	<b>Dec</b>	<b>Year</b>
<b><u>2006- Total</u></b>	<b><u>11920</u></b>	<b><u>12528</u></b>	<b><u>11237</u></b>	<b><u>12702</u></b>	<b><u>8321</u></b>	<b><u>8964</u></b>	<b><u>11588</u></b>	<b><u>13666</u></b>	<b><u>11089</u></b>	<b><u>13867</u></b>	<b><u>11134</u></b>	<b><u>13611</u></b>	<b><u>140627</u></b>
Holiday	10417	11367	10193	11872	7558	7934	10919	12751	10145	12492	10028	12273	127949
Business	485	522	464	527	542	621	446	391	621	680	779	548	6626
Holiday/Business	30	45	43	47	36	46	40	37	41	51	39	24	479
Transit	780	385	448	86	63	69	42	372	129	385	51	616	3426
Other/not stated	208	209	89	170	122	294	141	115	153	259	237	150	2147
<b><u>2007- Total</u></b>	<b><u>11170</u></b>	<b><u>14543</u></b>	<b><u>15557</u></b>	<b><u>14709</u></b>	<b><u>9967</u></b>	<b><u>10332</u></b>	<b><u>13704</u></b>	<b><u>14149</u></b>	<b><u>12491</u></b>	<b><u>16729</u></b>	<b><u>13290</u></b>	<b><u>14632</u></b>	<b><u>161273</u></b>
Holiday	10066	12445	14088	13893	9150	9397	12966	13069	11444	14851	12112	13431	146912
Business	658	610	642	521	621	644	523	391	598	745	689	633	7275
Holiday/Business	39	37	54	53	29	50	25	23	41	58	68	50	527
Transit	220	1180	545	62	61	55	39	595	194	691	270	249	4161
Other/not stated	187	271	228	180	106	186	151	71	214	384	151	269	2398
<b><u>2008- Total</u></b>	<b><u>12799</u></b>	<b><u>14863</u></b>	<b><u>16481</u></b>	<b><u>15063</u></b>	<b><u>11200</u></b>	<b><u>9546</u></b>	<b><u>13128</u></b>	<b><u>14139</u></b>	<b><u>11410</u></b>	<b><u>14189</u></b>	<b><u>12815</u></b>	<b><u>13319</u></b>	<b><u>158952</u></b>
Holiday	10274	12631	14958	13817	10219	8558	11415	13194	10287	13040	11229	12390	142012
Business	744	757	1003	922	769	692	715	576	731	829	912	584	9234
Holiday/Business	34	52	56	71	41	59	35	21	44	42	59	53	567
Transit	1543	1159	279	37	52	26	23	86	22	25	246	110	3608
Other/not stated	204	264	185	216	119	211	940	262	326	253	369	182	3531
<b><u>2009- Total</u></b>	<b><u>11256</u></b>	<b><u>12552</u></b>	<b><u>14056</u></b>	<b><u>14444</u></b>	<b><u>11746</u></b>	<b><u>10725</u></b>	<b><u>12689</u></b>	<b><u>14192</u></b>	<b><u>12236</u></b>	<b><u>15115</u></b>	<b><u>14279</u></b>	<b><u>0</u></b>	<b><u>143290</u></b>
Holiday	9695	11290	12904	13557	10774	9709	11604	13272	11082	13472	12033		129392
Business	678	546	872	649	708	693	821	664	751	1215	1120		8717
Holiday/Business	54	47	74	44	47	66	32	32	44	61	47		548
Transit	640	560	90	70	91	53	35	34	26	21	162		1782
Other/not stated	189	109	116	124	126	204	197	190	333	346	917		2851

**Source: National Statistics Bureau from disembarkation cards**

**VISITOR ARRIVALS BY COUNTRY OF RESIDENT AND MONTH, 2009**

**Table 3**

<b>Country of Residence</b>	<b>Jan</b>	<b>Feb</b>	<b>Mar</b>	<b>Apr</b>	<b>May</b>	<b>Jun</b>	<b>Jul</b>	<b>Aug</b>	<b>Sep</b>	<b>Oct</b>	<b>Nov</b>	<b>Dec</b>	<b>Total</b>
<b><u>TOTAL</u></b>	<b><u>11256</u></b>	<b><u>12552</u></b>	<b><u>14056</u></b>	<b><u>14444</u></b>	<b><u>11746</u></b>	<b><u>10725</u></b>	<b><u>12689</u></b>	<b><u>14192</u></b>	<b><u>12236</u></b>	<b><u>15115</u></b>	<b><u>14279</u></b>	<b><u>0</u></b>	<b><u>143290</u></b>
<b><u>EUROPE</u></b>	<b><u>9055</u></b>	<b><u>10418</u></b>	<b><u>11112</u></b>	<b><u>11088</u></b>	<b><u>9498</u></b>	<b><u>8260</u></b>	<b><u>9581</u></b>	<b><u>11805</u></b>	<b><u>9377</u></b>	<b><u>11426</u></b>	<b><u>10717</u></b>	<b><u>0</u></b>	<b><u>112337</u></b>
France	2210	3520	3307	3132	2399	1590	2047	2219	2051	3249	3109		28833
United Kingdom	570	845	1066	975	859	924	1127	1269	998	1106	690		10429
Eire ( Northern )	7	4	2	4	8	5	11	5	4	6	1		57
Germany	1772	1496	1513	1664	1768	1215	1420	1784	1650	2219	2114		18615
Italy	1305	1938	2787	2169	1886	2577	2182	4072	2545	1598	1422		24481
Switzerland	306	410	381	576	414	288	516	241	480	865	646		5123
Austria	290	312	209	249	202	140	279	237	183	279	220		2600
Belgium	95	125	155	316	218	125	193	158	164	230	218		1997
Luxembourg	6	17	11	34	57	9	23	61	17	28	27		290
Netherlands	52	117	60	180	107	87	159	110	85	134	95		1186
Denmark	66	113	98	83	19	38	99	30	37	65	27		675
Finland	49	63	55	37	19	31	25	19	18	54	70		440
Norway	26	66	31	52	14	34	56	28	24	33	59		423
Sweden	72	47	47	92	30	71	28	26	22	89	91		615
Portugal	4	39	20	29	28	29	40	76	29	28	47		369
Spain	96	99	98	201	161	222	278	431	258	212	371		2427
Russia	1233	491	547	695	912	395	502	471	346	554	918		7064
Ukraine	105	50	89	74	44	43	88	48	78	84	89		792
Estonia	12	14	9	2	8	0	1	0	2	11	6		65
Latvia	26	11	25	2	4	4	3	5	1	0	6		87
Kazakhstan	55	16	14	2	1	11	1	19	3	7	4		133
Belarus	14	0	4	4	4	1	1	2	9	5	4		48
Other USSR	38	13	21	13	9	15	12	15	9	19	14		178
Yugoslavia	2	0	0	0	0	0	0	0	0	0	0		2
Serbia	30	5	4	7	6	6	7	4	12	4	7		92
Croatia	5	25	16	7	2	3	11	10	3	0	2		84
Slovenia	30	44	31	41	6	13	20	6	10	39	14		254
Bosnia & Herzegovina	2	0	2	0	2	0	0	2	0	3	0		11
Other Yugoslavia	2	0	0	0	0	1	2	2	0	0	0		7
Czech Republic	90	150	153	94	72	70	52	70	75	163	217		1206
Slovakia Republic	15	38	20	20	17	22	4	9	13	18	13		189
Ireland	22	15	30	28	33	51	64	23	40	35	17		358
Iceland	0	1	0	2	0	0	0	0	0	0	0		3
Hungary	146	142	52	38	22	22	41	43	33	52	30		621
Romania	32	23	16	27	17	21	20	28	31	28	13		256
Greece	39	23	104	46	28	60	102	108	49	59	24		642
Poland	169	54	64	76	67	46	39	61	48	79	63		766
Bulgaria	30	31	20	24	16	11	21	13	5	7	13		191
Monaco	7	12	16	21	3	6	11	16	2	22	9		125
Turkey	10	25	18	31	14	29	56	41	14	19	17		274
Cyprus	12	11	4	24	8	18	24	36	14	11	9		171
Other	3	13	13	17	14	27	16	7	15	12	21		158

Table 3 (continued)

Country of Residence	Jan	Feb	Mar	Apr	May	Jun	Jul	Aug	Sep	Oct	Nov	Dec	Total
<b><u>AFRICA</u></b>	<b><u>1431</u></b>	<b><u>888</u></b>	<b><u>1563</u></b>	<b><u>1823</u></b>	<b><u>1249</u></b>	<b><u>1261</u></b>	<b><u>1453</u></b>	<b><u>1284</u></b>	<b><u>1298</u></b>	<b><u>1978</u></b>	<b><u>1687</u></b>	<b><u>0</u></b>	<b><u>15915</u></b>
South Africa	482	372	687	936	472	732	486	518	820	678	557		6740
Botswana	12	3	9	11	3	7	4	4	11	0	3		67
Lesotho	0	0	4	0	0	0	1	0	4	2	1		12
Swaziland	3	2	2	0	3	0	5	0	4	1	2		22
Namibia	4	3	3	15	15	5	18	8	9	10	18		108
Zimbabwe	13	9	14	9	5	3	12	18	8	10	11		112
Malawi	0	0	2	3	1	0	3	1	1	1	2		14
Zambia	0	2	16	9	7	4	7	8	4	6	6		69
Kenya	44	47	85	69	68	66	54	75	40	94	115		757
Tanzania	5	4	14	33	3	9	8	18	3	10	15		122
Uganda	7	10	6	17	9	9	7	4	9	18	18		114
Reunion	431	98	330	184	335	92	340	182	139	507	299		2937
Mauritius	259	232	247	303	234	233	305	294	167	413	443		3130
Senegal	0	0	0	0	7	4	3	2	2	1	6		25
Comoros	1	0	5	3	2	2	4	1	0	3	2		23
Djibouti	0	0	22	3	0	12	10	18	0	11	1		77
Ethiopia	6	7	2	11	9	1	4	5	0	13	14		72
Madagascar	73	37	24	31	19	15	15	15	11	25	24		289
Somalia	0	0	0	0	0	0	0	0	0	0	0		0
Nigeria	29	14	12	76	8	4	39	32	20	56	14		304
Egypt	7	6	12	13	5	4	12	0	2	13	7		81
Libya	3	1	0	0	2	2	4	7	10	8	2		39
Morocco	10	13	7	14	4	23	31	8	4	3	13		130
Sudan	3	2	6	1	4	3	8	5	7	3	5		47
Tunisia	8	3	2	5	7	7	18	2	3	4	11		70
Ivory Coast	2	3	1	4	0	0	2	2	3	3	2		22
Ghana	5	0	0	1	6	0	11	7	1	31	7		69
Gabon	1	0	0	0	0	1	2	0	0	5	2		11
Algeria	3	2	0	6	0	0	6	1	1	2	1		22
Rwanda	4	1	6	22	0	2	1	2	5	4	4		51
DR Congo ( Ex-Zaire)	1	1	4	5	0	5	4	4	0	7	2		33
Mozambique	6	3	4	5	3	0	4	20	2	3	6		56
Burundi	2	1	1	5	0	6	0	0	0	4	5		24
Mayotte	2	1	30	10	10	3	7	9	2	12	46		132
Angola	3	4	1	17	5	0	3	5	5	2	9		54
Cameroon	2	4	2	1	0	2	7	0	1	9	8		36
Other	0	3	3	1	3	5	8	9	0	6	6		44

**Table 3 (continued)**

<b>Country of Residence</b>	<b>Jan</b>	<b>Feb</b>	<b>Mar</b>	<b>Apr</b>	<b>May</b>	<b>Jun</b>	<b>Jul</b>	<b>Aug</b>	<b>Sep</b>	<b>Oct</b>	<b>Nov</b>	<b>Dec</b>	<b>Total</b>
<b><u>ASIA</u></b>	<b><u>493</u></b>	<b><u>670</u></b>	<b><u>798</u></b>	<b><u>1117</u></b>	<b><u>696</u></b>	<b><u>806</u></b>	<b><u>1345</u></b>	<b><u>773</u></b>	<b><u>1104</u></b>	<b><u>1213</u></b>	<b><u>1357</u></b>	<b><u>0</u></b>	<b><u>10372</u></b>
United Arab Emirates	113	151	250	335	164	335	700	284	412	299	457		3500
Bahrain	11	6	13	46	34	23	17	43	31	73	28		325
Iran	3	14	31	3	10	5	0	0	2	6	2		76
Iraq	0	0	0	0	0	1	0	0	4	0	0		5
Jordan	2	0	1	0	2	5	7	4	5	6	7		39
Kuwait	12	18	13	14	4	6	5	2	12	10	21		117
Lebanon	0	5	8	20	9	20	24	19	18	6	4		133
Oman	3	3	4	12	7	7	4	3	5	7	6		61
Qatar	22	69	125	274	50	29	95	43	138	28	104		977
Saudi Arabia	5	35	39	75	44	43	75	36	57	34	73		516
Syria	0	0	3	1	2	6	3	2	3	0	3		23
Israel	5	14	22	32	2	6	20	26	13	242	20		402
Yemen	0	1	1	0	1	0	1	2	2	2	0		10
Other (Middle East)	0	1	0	0	1	0	0	0	1	0	0		3
Bangladesh	2	4	0	3	3	2	3	0	5	17	31		70
India	61	53	71	94	152	102	84	66	147	163	241		1234
Pakistan	6	8	2	2	5	14	15	4	3	15	6		80
Sri Lanka	28	15	16	31	8	21	25	23	17	10	23		217
Madives	4	4	2	6	8	6	18	7	2	9	12		78
Other (Indian Sub-Continent)	1	1	3	5	3	2	4	1	4	8	4		36
China	72	81	66	48	56	36	80	68	53	139	160		859
Hong Kong	3	4	4	4	10	8	9	4	2	14	4		66
Indonesia	12	15	8	3	19	1	7	5	1	3	15		89
Japan	27	28	44	17	21	28	38	43	61	32	14		353
Korea (Southern)	13	22	1	1	3	7	6	1	4	6	19		83
Malaysia	12	13	8	5	11	16	9	15	12	21	22		144
Singapore	57	45	29	42	22	52	54	30	53	36	42		462
Taiwan	0	1	0	5	14	1	3	27	0	0	7		58
Thailand	6	11	13	15	14	9	25	2	7	14	22		138
Philippines	11	47	20	21	13	11	9	7	30	10	10		189
Other (Far East)	2	1	1	3	4	4	5	6	0	3	0		29

**Table 3 (continued)**

<b>Country of Residence</b>	<b>Jan</b>	<b>Feb</b>	<b>Mar</b>	<b>Apr</b>	<b>May</b>	<b>Jun</b>	<b>Jul</b>	<b>Aug</b>	<b>Sep</b>	<b>Oct</b>	<b>Nov</b>	<b>Dec</b>	<b>Total</b>
<b><u>OCEANIA</u></b>	<b><u>66</u></b>	<b><u>83</u></b>	<b><u>45</u></b>	<b><u>85</u></b>	<b><u>46</u></b>	<b><u>43</u></b>	<b><u>74</u></b>	<b><u>62</u></b>	<b><u>58</u></b>	<b><u>72</u></b>	<b><u>92</u></b>	<b><u>0</u></b>	<b><u>726</u></b>
Australia	58	45	37	73	38	30	66	55	46	58	68		574
New Zealand	5	5	8	10	6	13	7	5	10	12	23		104
Other	3	33	0	2	2	0	1	2	2	2	1		48
<b><u>AMERICA</u></b>	<b><u>211</u></b>	<b><u>493</u></b>	<b><u>538</u></b>	<b><u>331</u></b>	<b><u>257</u></b>	<b><u>355</u></b>	<b><u>236</u></b>	<b><u>268</u></b>	<b><u>399</u></b>	<b><u>426</u></b>	<b><u>426</u></b>	<b><u>0</u></b>	<b><u>3940</u></b>
Canada	35	48	59	44	35	32	30	37	27	47	39		433
USA	140	415	444	266	196	254	177	202	329	343	339		3105
Mexico	3	1	2	5	2	6	6	4	4	3	12		48
W. Indies	5	2	7	5	0	1	6	0	10	7	1		44
Argentina	14	11	12	4	8	4	13	6	9	8	16		105
Brazil	9	8	4	2	11	49	3	4	10	10	12		122
Other	5	8	10	5	5	9	1	15	10	8	7		83

Source: National Statistics Bureau from disembarkation cards.

**VISITOR DEPARTURES: DISTRIBUTION OF LENGTH OF STAY, 2000-2009**

**Table 4**

	Length of stay (% nights)										Average length of stay (nights)
	0	1 - 2	3 - 6	7 - 8	9 - 13	14 - 15	16 - 20	21 - 28	29+	Total	
<b>2000</b>	2	3	21	23	28	12	5	3	2	100	10.4
<b>2001</b>	2	4	18	27	28	12	5	3	2	100	10.4
<b>2002</b>	2	4	21	22	31	9	5	3	2	100	10.1
<b>2003</b>	2	4	21	22	33	10	5	3	1	100	10.1
<b>2004</b>	2	4	21	22	33	9	5	2	2	100	10.0
<b>2005</b>	3	5	20	23	30	11	4	3	1	100	9.7
<b>2006</b>	2	4	19	24	30	12	4	3	1	100	9.8
<b>2007</b>	1	4	20	25	31	12	4	2	1	100	9.9
<b>2008</b>	1	4	20	23	32	11	4	3	2	100	10.1
<b>2009</b>											10.1
<b><u>2008</u></b>											
<b>Jan</b>	5	7	15	21	33	9	5	3	1	100	10.2
<b>Feb</b>	2	9	20	26	27	9	3	3	2	100	8.9
<b>Mar</b>	1	2	19	28	31	12	3	2	2	100	9.7
<b>Apr</b>	0	2	25	23	31	11	4	2	2	100	9.9
<b>May</b>	0	2	18	26	34	12	3	2	2	100	10.0
<b>Jun</b>	0	3	23	23	32	12	3	2	2	100	10.1
<b>Jul</b>	0	3	18	21	34	13	6	3	1	100	10.4
<b>Aug</b>	0	2	15	18	36	15	7	5	2	100	11.1
<b>Sep</b>	0	3	19	22	34	13	5	2	2	100	10.5
<b>Oct</b>	0	3	22	23	34	11	4	2	1	100	9.0
<b>Nov</b>	0	4	19	24	33	11	4	2	1	100	9.7
<b>Dec</b>	0	4	27	25	25	10	4	3	2	100	9.6
<b><u>2009</u></b>											
<b>Jan</b>	3	4	19	21	31	11	5	4	2	100	10.5
<b>Feb</b>	3	5	23	24	27	9	4	2	2	100	9.5
<b>Mar</b>	1	2	24	26	29	11	4	2	2	100	10.1
<b>Apr</b>	1	3	23	25	31	10	4	2	2	100	10.0
<b>May</b>	1	2	21	25	34	11	3	2	1	100	9.9
<b>Jun</b>	1	3	26	22	32	11	3	1	1	100	9.8
<b>Jul</b>	0	4	21	21	33	10	5	4	1	100	10.5
<b>Aug</b>	0	2	15	19	33	16	8	5	2	100	11.6
<b>Sep</b>	0	3	20	22	33	13	4	2	2	100	10.4
<b>Oct</b>	0	3	21	24	35	9	4	2	1	100	9.8
<b>Nov</b>	1	4	20	22	33	11	5	3	1	100	10.0
<b>Dec</b>											

Source: National Statistics Bureau from disembarkation cards.

**VISITOR ARRIVALS BY MODE OF TRANSPORT, 2008 - 2009**

**Table 5**

**Number of visitors**

	<b>TRANSIT</b>			<b>NON - TRANSIT</b>			<b>TOTAL VISITORS</b>		
<u>Year/Month</u>	<b>Air</b>	<b>Sea</b>	<b>Total</b>	<b>Air</b>	<b>Sea</b>	<b>Total</b>	<b>Air</b>	<b>Sea</b>	<b>Total</b>
<b><u>2008</u></b>									
January	939	604	1543	11211	45	11256	12150	649	12799
February	781	378	1159	13138	566	13704	13919	944	14863
March	153	126	279	15941	261	16202	16094	387	16481
April	28	9	37	14941	85	15026	14969	94	15063
May	40	12	52	11100	48	11148	11140	60	11200
June	24	2	26	9502	18	9520	9526	20	9546
July	20	3	23	13050	55	13105	13070	58	13128
August	77	9	86	14024	29	14053	14101	38	14139
September	18	4	22	11336	52	11388	11354	56	11410
October	25	0	25	14129	35	14164	14154	35	14189
November	95	151	246	12488	81	12569	12583	232	12815
December	90	20	110	13136	73	13209	13226	93	13319
<b>Total</b>	<b>2290</b>	<b>1318</b>	<b>3608</b>	<b>153996</b>	<b>1348</b>	<b>155344</b>	<b>156286</b>	<b>2666</b>	<b>158952</b>
<b><u>2009</u></b>									
January	259	380	639	10518	99	10617	10777	479	11256
February	247	313	560	11640	352	11992	11887	665	12552
March	66	24	90	13606	360	13966	13672	384	14056
April	43	27	70	14344	30	14374	14387	57	14444
May	78	13	91	11620	35	11655	11698	48	11746
June	40	13	53	10638	34	10672	10678	47	10725
July	26	9	35	12644	10	12654	12670	19	12689
August	27	7	34	14144	14	14158	14171	21	14192
September	23	3	26	12194	16	12210	12217	19	12236
October	14	7	21	15064	30	15094	15078	37	15115
November	155	7	162	14047	70	14117	14202	77	14279
December			0			0	0	0	0
<b>Total</b>	<b>978</b>	<b>803</b>	<b>1781</b>	<b>140459</b>	<b>1050</b>	<b>141509</b>	<b>141437</b>	<b>1853</b>	<b>143290</b>

**Source: National Statistics Bureau from disembarkation cards**

**VISITORS STAY BY LOCATION, 2008 - 2009**

**Table 6(a)**

		Mahe	%	Praslin	%	La Digue	%	Other Islands	%	On Vessel(1)	%	Total	%
January	2008	6466	51%	2744	21%	635	5%	973	8%	1981	15%	12799	100%
	2009	5404	48%	2383	21%	542	5%	1098	10%	1829	16%	11256	100%
February	2008	6607	44%	3644	25%	676	5%	1176	8%	2760	19%	14863	100%
	2009	5510	44%	3170	25%	809	6%	1323	11%	1740	14%	12552	100%
March	2008	7766	47%	4281	26%	1033	6%	1664	10%	1737	11%	16481	100%
	2009	6432	46%	3797	27%	916	7%	1617	12%	1294	9%	14056	100%
April	2008	6698	44%	4031	27%	1004	7%	2007	13%	1323	9%	15063	100%
	2009	6570	45%	3850	27%	975	7%	1855	13%	1194	8%	14444	100%
May	2008	5447	49%	3090	28%	758	7%	943	8%	962	9%	11200	100%
	2009	5199	44%	3124	27%	713	6%	1739	15%	971	8%	11746	100%
June	2008	4821	51%	2665	28%	669	7%	803	8%	588	6%	9546	100%
	2009	5063	47%	2899	27%	733	7%	1535	14%	495	5%	10725	100%
July	2008	7027	54%	3469	26%	887	7%	997	8%	748	6%	13128	100%
	2009	6705	53%	3281	26%	752	6%	1404	11%	547	4%	12689	100%
August	2008	6991	49%	3928	28%	831	6%	1609	11%	780	6%	14139	100%
	2009	7217	51%	3763	27%	1007	7%	1656	12%	549	4%	14192	100%
September	2008	5789	51%	3005	26%	814	7%	1168	10%	634	6%	11410	100%
	2009	6043	49%	3347	27%	815	7%	1608	13%	423	3%	12236	100%
October	2008	7072	50%	3653	26%	942	7%	1500	11%	1022	7%	14189	100%
	2009	7858	52%	3770	25%	858	6%	1872	12%	757	5%	15115	100%
November	2008	6440	50%	3086	24%	692	5%	1466	11%	1131	9%	12815	100%
	2009	7545	53%	3387	24%	667	5%	1766	12%	914	6%	14279	100%
December	2008	7102	53%	3041	23%	708	5%	1592	12%	876	7%	13319	100%
	2009												
Total	2008	78226	49%	40637	26%	9649	6%	15898	10%	14542	9%	158952	100%
	2009	69546	49%	36771	26%	8787	6%	17473	12%	10713	7%	143290	100%

(1) Includes yachts, cruise ship and sea bound vessels.

**VISITORS STAY BY ACCOMMODATION, 2008 - 2009**

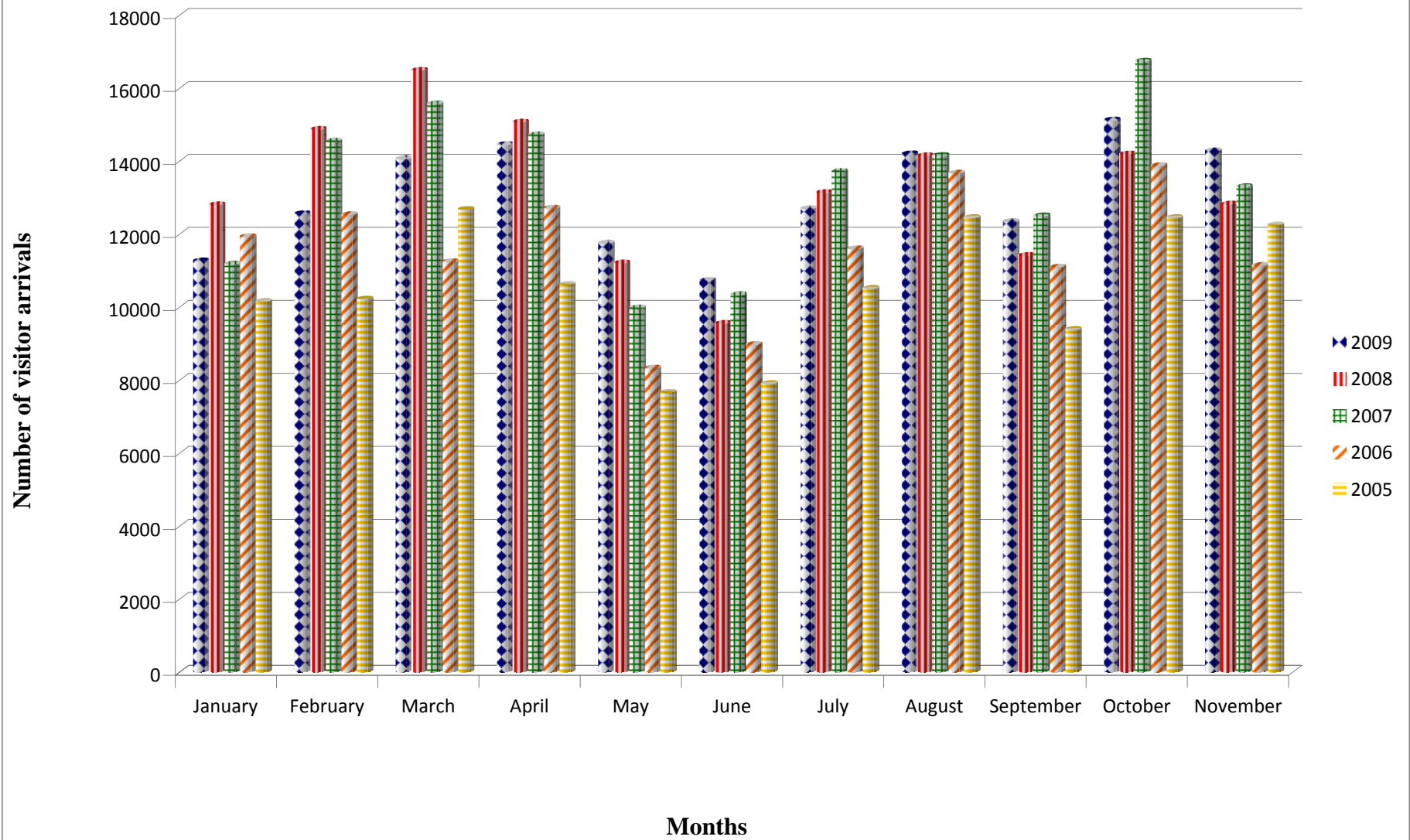
**Table 6(b)**

		Hotels(1)	%	Friends	%	Yachts	%	Cruise Ships	%	Vessel	%	Others	%	Total	%
January	2008	9736	76%	963	8%	938	7%	1032	8%	0	0%	130	1%	12799	100%
	2009	8307	74%	882	8%	898	8%	919	8%	12	5%	238	2%	11256	100%
February	2008	11065	74%	878	6%	1138	8%	1621	11%	0	0%	161	1%	14863	100%
	2009	9883	79%	812	6%	662	5%	1071	9%	7	0%	117	1%	12552	100%
March	2008	13411	81%	1167	7%	1360	8%	373	2%	0	0%	170	1%	16481	100%
	2009	11538	82%	1101	8%	880	6%	409	3%	10	0%	118	1%	14056	100%
April	2008	12721	84%	871	6%	1307	9%	13	0%	0	0%	151	1%	15063	100%
	2009	11973	83%	1159	8%	1036	7%	146	1%	12	0%	118	1%	14444	100%
May	2008	9244	83%	875	8%	952	9%	0	0%	0	0%	129	1%	11200	100%
	2009	9909	84%	686	6%	962	8%	6	0%	3	0%	180	2%	11746	100%
June	2008	8001	84%	800	8%	584	6%	0	0%	0	0%	161	2%	9546	100%
	2009	9344	87%	742	7%	471	4%	0	0%	24	0%	144	1%	10725	100%
July	2008	10355	79%	1119	9%	747	6%	0	0%	0	0%	907	7%	13128	100%
	2009	10683	84%	1171	9%	518	4%	0	0%	29	0%	288	2%	12689	100%
August	2008	12022	85%	1064	8%	767	5%	0	0%	0	0%	286	2%	14139	100%
	2009	12084	85%	1357	10%	529	4%	0	0%	20	0%	202	1%	14192	100%
September	2008	9846	86%	703	6%	633	6%	0	0%	0	0%	228	2%	11410	100%
	2009	10860	89%	701	6%	404	3%	1	0%	18	0%	252	2%	12236	100%
October	2008	11879	84%	1005	7%	1020	7%	2	0%	0	0%	283	2%	14189	100%
	2009	12737	84%	1196	8%	742	5%	7	0%	8	0%	425	3%	15115	100%
November	2008	10296	80%	979	8%	821	6%	276	2%	0	0%	443	3%	12815	100%
	2009	11689	82%	943	7%	798	6%	3	0%	113	0%	733	5%	14279	100%
December	2008	10694	80%	1542	12%	829	6%	33	0%	0	0%	221	2%	13319	100%
	2009														
Total	2008	129270	81%	11966	8%	11096	7%	3350	2%	0	0%	3270	2%	158952	100%
	2009	119007	83%	10750	8%	7900	6%	2562	2%	256	0%	2815	2%	143290	100%

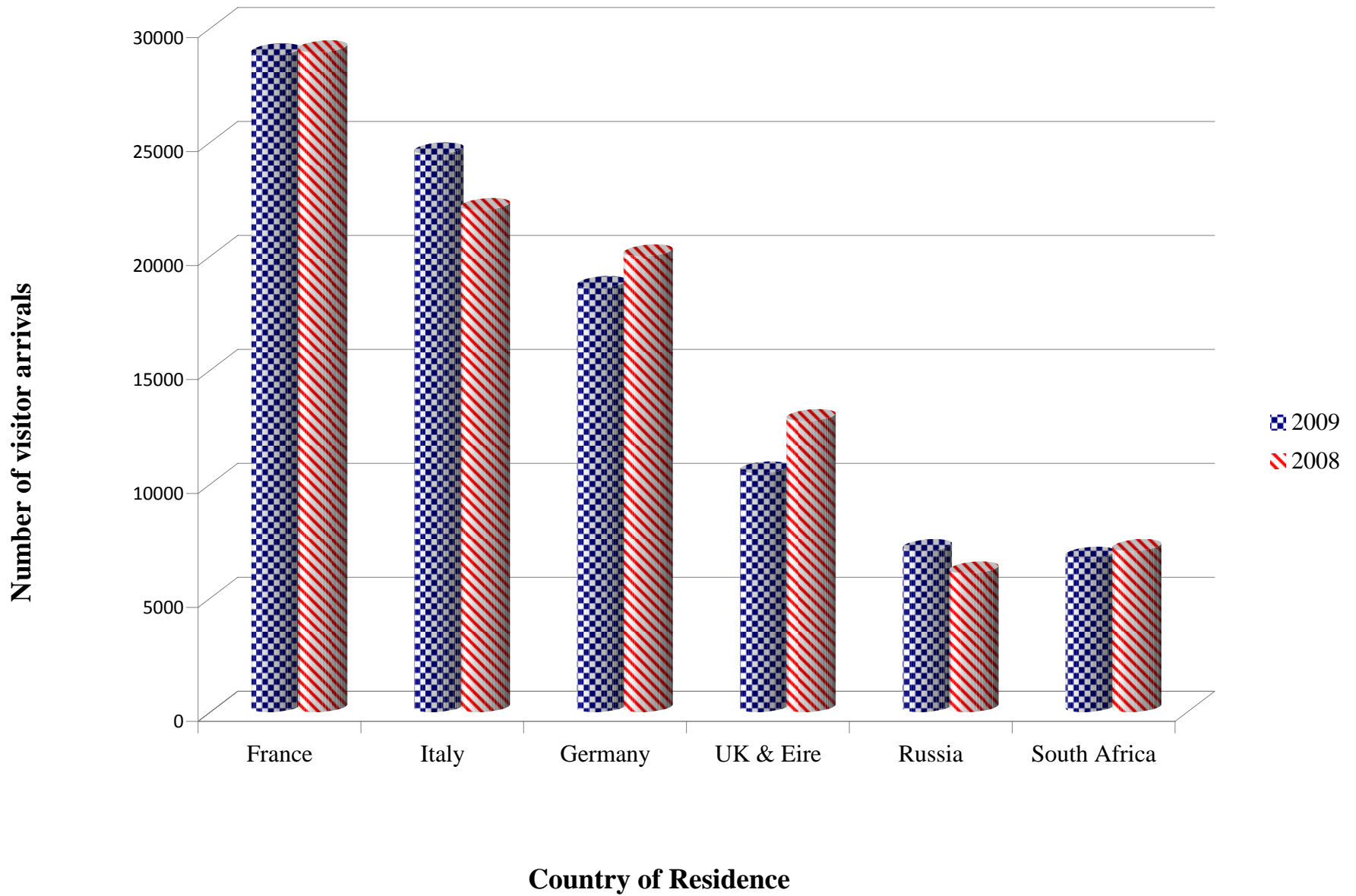
Source: National Statistics Bureau from disembarkation cards

(1) Includes guest houses & self-catering establishments.

# Visitor arrivals for the first eleven months of the last five years



## Leading markets to date for 2009 as compared to 2008



Percentage of visitors stay by location for the first eleven months, 2009

